



U.S. ECONOMIC DEVELOPMENT ADMINISTRATION

ANNUAL REPORT
FISCAL YEAR 2023

TABLE OF CONTENTS

3	A Message from the Secretary of Commerce to the President of the Senate
4	A Message from the Secretary of Commerce to the Speaker of the House of Representatives
5	A Message from the Assistant Secretary of Commerce for Economic Development
8	EDA By the Numbers Calendar Year 2023
9	EDA's Mission and Role
10	EDA Investment Priorities
11	Ongoing Investment Programs
12	EDA's Regional Offices
13	Statement of Appropriations for FY 2023
14	Private Sector Investment Goals
15	States and U.S. Territories Project Highlights
69	EDA's FY 2023 Financial Highlights
70	Summary of EDA FY 2023 Awards (including supplemental* awards)
88	Summary of Estimated Private Investment from EDA's FY 2023 Public Works and Economic Adjustment Assistance (regular) Construction Awards
91	Summary of EDA FY 2023 Funding and Awards by Program Category per State/Territory (including supplemental* awards)

ABOUT THIS REPORT

This report is designed to be a web-based resource. The report includes case studies of investments in any given state or territory, and allows readers to easily view the Fiscal Year summary. Using the appendix at the end of this report, communities can see all the projects that EDA has undertaken with local partners in their regions and around the country. To review the online version of this report, please visit EDA's website [here](#).

A MESSAGE FROM THE SECRETARY OF COMMERCE

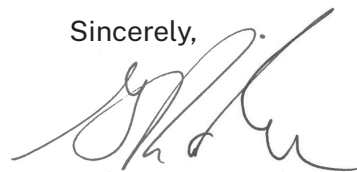
The Honorable Kamala Harris
President of the Senate
United States Senate
Washington, DC 20510

Dear Madam President:

I am pleased to submit the enclosed annual report on the activities of the U.S. Economic Development Administration (EDA), U.S. Department of Commerce, for FY 2023, in compliance with Section 603 of the Public Works and Economic Development Act of 1965, as amended (42 U.S.C. § 3213).

This report is designed to be a web-based resource. The report includes case studies of investments in any given state or territory, and allows readers to easily view the Fiscal Year summary. Using the appendix at the end of this report, communities can see all the projects that EDA has undertaken with local partners in their regions and around the country. To review the online version of this report, please visit EDA's website [here](#).

Sincerely,



GINA M. RAIMONDO
Secretary of Commerce



A MESSAGE FROM THE SECRETARY OF COMMERCE

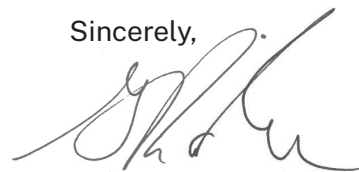
The Honorable Mike Johnson
Speaker of the House of Representatives
U.S. House of Representatives
Washington, DC 20515

Dear Mister Speaker:

I am pleased to submit the enclosed annual report on the activities of the U.S. Economic Development Administration (EDA), U.S. Department of Commerce, for FY 2023, in compliance with Section 603 of the Public Works and Economic Development Act of 1965, as amended (42 U.S.C. § 3213).

This report is designed to be a web-based resource. The report includes case studies of investments in any given state or territory, and allows readers to easily view the Fiscal Year summary. Using the appendix at the end of this report, communities can see all the projects that EDA has undertaken with local partners in their regions and around the country. To review the online version of this report, please visit EDA's website [here](#).

Sincerely,



GINA M. RAIMONDO
Secretary of Commerce



MESSAGE FROM THE ASSISTANT SECRETARY OF COMMERCE FOR ECONOMIC DEVELOPMENT



I am honored to report to Congress the accomplishments of the U.S Department of Commerce, Economic Development Administration (EDA) for Fiscal Year (FY) 2023. Through approximately \$406 million in federal funds across 592 projects, EDA has catalyzed the creation of over 17,500 jobs and generated nearly \$2.7 billion in private investment, this year alone. These numbers are not just statistics; they represent real, transformative changes in communities across the United States, affirming our unwavering commitment to equitable and inclusive economic growth.

But this year's report reflects more than just one fiscal year of success at the EDA. This report proves that the Biden-Harris Administration's Investing in America agenda is delivering on its promises to the American people. FY 2023 saw the once-in-a-generation investments from the CHIPS and Science Act, Inflation Reduction Act, Bipartisan Infrastructure Law, and the American Rescue Plan bear fruit that will make America stronger, safer, and more competitive than ever.

Throughout the year, our dedicated team of public servants work tirelessly to equitably deliver EDA assistance that is helping our communities, regions, and businesses plan for the future; build the infrastructure they need to succeed; obtain the capital, technical assistance, tools and resources to grow and thrive; establish dynamic hubs of innovation; and come back stronger from natural disasters.

ARPA: From Plan to Action

Three years after \$3 billion was allocated to EDA under the American Rescue Plan, our agency continues our work in communities across the United States. The Build Back Better Regional Challenge (BBBRC) continues to rebuild American communities, including those grappling with decades of disinvestment. The Good Job Challenge (GJC) is expanding career opportunities for more Americans to reach their full potential and secure good-paying jobs while producing a skilled workforce to ensure the United States is prepared to innovate, compete, and succeed in a 21st Century global economy.

Through ARP's innovative programs and 780 grants awarded, Americans are getting quality jobs in new industries. In North Carolina and Virginia, for example, the Hampton Roads Workforce Council is training local residents to work in the growing blue economy, clean energy and cybersecurity sectors. In Illinois, Rend Lake College is developing the Southern Illinois Manufacturing Academy to expand advanced manufacturing workforce training opportunities in a region that has been impacted by the declining use of coal. And in Nevada,

In 2023, EDA continued to provide traditional economic development assistance while also providing impactful, targeted, regionally focused placed based programing necessary to advance American innovation and establish long-term economic growth in long neglected communities.

the Walker River Paiute Tribe is improving and expanding water system infrastructure, enabling business growth and addressing a long-standing need in the tribal community. Over 70% of all ARP competitive award funds are expected to directly benefit historically underserved communities and populations, like with the tribal community in Nevada, allowing greater economic participation for their residents in the years to come.

Innovation at the Forefront

In 2023, EDA continued to provide traditional economic development assistance while also providing impactful, targeted, regionally focused placed based programing necessary to advance American innovation and establish long-term economic growth in long neglected communities.

In October, President Biden announced the designation of the inaugural 31 Tech Hubs, as well as the recipients of 29 Tech Hubs Strategy Development Grants, authorized as part of the CHIPS and Science Act of 2022.

Led by EDA, the Tech Hubs program is investing directly in regions with the assets, resources, capacity, and potential to transform into globally competitive innovation centers, while catalyzing the creation of good jobs for American workers at all skill levels, equitably and inclusively.

The initial \$500 million investment our Tech Hubs grantees unlocked is part of a “downpayment” appropriated by Congress and expandable to its full authorization level of \$10 billion. We look forward to working with Congress to ensure resources are available that will help us fully realize this generational commitment to the communities counting on it.

We also deployed \$53 million through our long-running Build to Scale program to support projects that strengthen equitable ecosystems and increase access to capital for innovators, entrepreneurs, and startups. By focusing specifically on the needs of entrepreneurs starting and growing new companies to bring new technologies to the market, Build to Scale complements the Tech Hubs program and EDA’s traditional programs.

In December, the Biden-Harris Administration announced the 22 finalists of EDA’s Distressed Area Recompete Pilot Program (Recompete). Recompete targets the hardest-hit and most economically distressed areas where prime-age (25-54 years) employment is significantly lower than the national average, with the goal to close this gap through flexible, locally driven investments.

Authorized by the CHIPS and Science Act, Recompete is a key part of President Biden’s Investing in America agenda. Recompete will invest \$200 million in economic and workforce development projects that connect workers to good jobs in geographically diverse and persistently distressed communities across the country.

*Our achievements are
a collective testament
to what we can accomplish
when we harness the power
of community, innovation,
and strategic investment.*

Connecting Communities

Our efforts in 2023 have significantly enhanced the fabric of connections across communities, industries, and educational institutions. The EDA's Communities of Practice have matured, delivering impactful programming and assistance that empowers economic development practitioners to maximize their efforts. The designation of 23 EDA University Centers, including diverse institutions such as HBCUs and HSIs, reflects our dedication to leveraging academic assets to promote innovation and strengthen regional economies. The anticipation surrounding the Economic Recovery Corps highlights the demand for innovative economic development strategies and our commitment to meeting this need by deploying professionals to support development agencies nationwide.

Looking Ahead with Optimism

As we reflect on the progress made in 2023, we are reminded of the journey that lies ahead. economic development is a dynamic process, one that requires continuous adaptation and innovation. EDA is poised to embrace the challenges of 2024 and beyond, building on our legacy of spurring equitable, place-based economic development. Our story is one of resilience, innovation, and unwavering dedication to the American people. Together, we are not just competing; we are outcompeting, setting new standards of excellence and inclusivity in economic development.

The Biden-Harris Administration is committed to growing our economy from the bottom up and middle out so that all have the opportunity to succeed. I am proud of the work that EDA's employees do every day to assist this whole-of-government effort.

I thank Congress for their steadfast support of the EDA's mission. Our achievements are a collective testament to what we can accomplish when we harness the power of community, innovation, and strategic investment.

As we look forward to the future, we do so with a renewed sense of purpose and optimism, ready to continue our work of transforming lives and communities across the nation.

Alejandra Y. Castillo

ALEJANDRA Y. CASTILLO

U.S. Assistant Secretary of Commerce for Economic Development

EDA BY THE NUMBERS CALENDAR YEAR 2023



584
Awards

\$403.5M
Funded

27,485
Jobs Supported

For every public dollar invested
by EDA, it's met with a 10X
or greater ROI in Private Investment

\$8.5B
Private Investment

PRESENTED TO GRANTEEES ACROSS AMERICA

REPORTED BY GRANTEEES



\$39.3M

Disaster Recovery Funding

AWARDED ACROSS AMERICA

PROGRAMMATIC UPDATES



\$16.5M
to 23 Institutions

23
New and Redesignated
University Centers



31
Designated Tech Hubs

29
Strategy Development
Grants Awarded



\$53M
to 60 Organizations



\$4.5M
to 11 Grantees



TOTAL INVESTMENTS IN CY 2023

This graphic reflects calendar year 2023;
for information on investments in FY 2023,
please see the tables in this report's index.

Over \$6.5B and 3,369 awards currently under active management*

From new roads, bridges, and water systems that help grow a region, to investments in education, technologies, and regional industry ecosystems that transform a nation, EDA is at the forefront of American progress. The EDA investment portfolio includes business- and job-creation projects that advance regional economic planning, infrastructure, workforce development training, and business capital growth, coupled with technical assistance, practical research, and so much more throughout the entire life of a grant.

*Reflects active EDA grants from FY 2018; data is as of 6/19/2024

EDA'S MISSION AND ROLE

The Department of Commerce's mission is to create the conditions for economic growth and opportunity for all communities. EDA helps carry out this mission as a bureau through its dedication to improving U.S. competitiveness globally and ensuring that the economy works for everyone.

The mission of EDA is to lead the federal economic development agenda by promoting innovation and competitiveness and preparing American regions for growth and success in the worldwide economy. EDA's investment policy is designed to establish a foundation for sustainable job growth and the building of durable regional economies throughout the United States.

Guided by the basic principle that sustainable economic development should be locally driven, EDA works directly with communities and regions to help them build capacity for economic development based on local business conditions and needs. EDA's grant investments in planning, technical assistance, and infrastructure construction are designed to leverage existing regional assets to support the implementation of economic development strategies that make it easier for businesses to start and grow. Through its network of regionally based staff and portfolio of flexible grant tools, EDA helps communities experiencing economic distress take control of their future and position themselves for economic prosperity and resiliency.



EDA INVESTMENT PRIORITIES**1****EQUITY**

Benefiting traditionally underserved groups, including but not limited to women, Black, Latino, and Indigenous and Native American persons, Asian Americans, and Pacific Islanders, and underserved communities, such as Tribal Lands, Persistent Poverty Counties, and rural areas.

2**RECOVERY AND RESILIENCE**

Recovering from the loss of a major industry and/or diversifying the local economy.

3**WORKFORCE DEVELOPMENT**

Supporting workforce and education and skills training activities directly connected to the hiring and skills needs of the business community and that result in well-paying, quality jobs.

4**MANUFACTURING**

Improving the competitiveness of domestic manufacturing through business expansion, technology and capital upgrades, and focusing on innovation.

5**TECHNOLOGY-BASED ECONOMIC DEVELOPMENT**

Supporting the knowledge base that support entrepreneurs and startups and the commercialization of new technologies that create technology-driven businesses and high-skilled, well-paying jobs of the future.

6**ENVIRONMENTALLY-SUSTAINABLE DEVELOPMENT**

Addressing the climate crisis through the development and implementation of green products, processes, places, and buildings.

7**EXPORTS AND FOREIGN DIRECT INVESTMENTS**

Building community assets to support growth in US exports or increased foreign direct investment.

ONGOING INVESTMENT PROGRAMS



PUBLIC WORKS

Empowers distressed communities to revitalize, expand, and upgrade their physical infrastructure.



ECONOMIC ADJUSTMENT ASSISTANCE

Focuses on areas that have experienced or face the threat of serious structural damage to their underlying economic base.



PLANNING

Supports local organizations with short-term and long-term planning efforts, in order to strategically guide the economic development of a region.



BUILD TO SCALE

Builds regional economies through scalable startup projects and businesses.



TRADE ADJUSTMENT ASSISTANCE

Strengthens the competitiveness of American companies that have lost domestic sales and employment to foreign competition.



UNIVERSITY CENTERS

Makes the resources of universities available to the economic development community through a federal partnership.



RESEARCH AND NATIONAL TECHNICAL ASSISTANCE

Funds research, evaluation, and technical assistance projects promoting competitiveness and innovation in distressed areas.



LOCAL TECHNICAL ASSISTANCE

Helps public and nonprofit leaders in distressed areas make optimal decisions on local economic development issues.



GOOD JOBS CHALLENGE

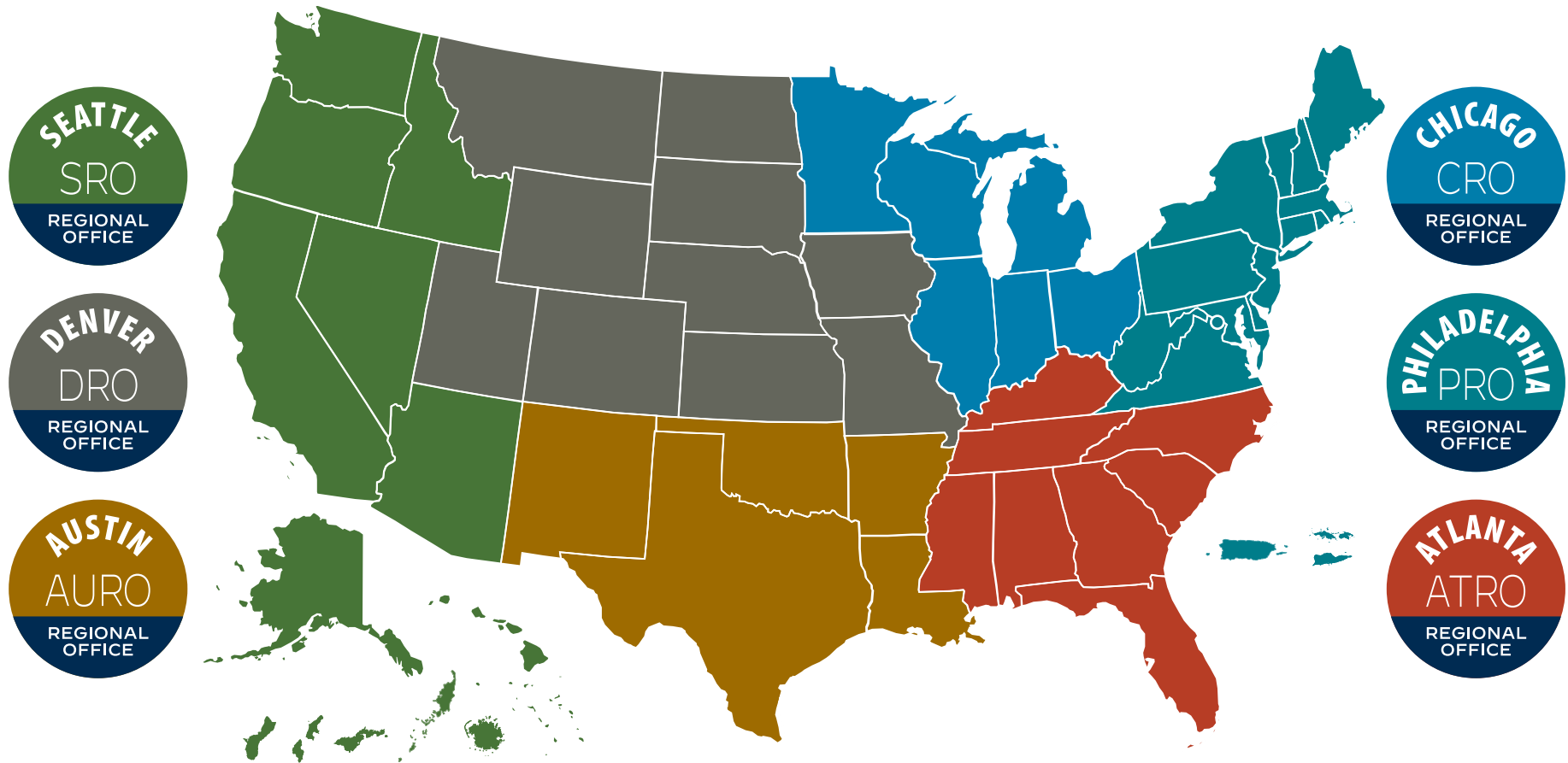
Creates workforce partnerships focusing on industries that are essential to U.S. global competitiveness and supply chain resiliency.



REGIONAL TECHNOLOGY AND INNOVATION HUBS (TECH HUBS)

Strengthens U.S. economic and national security by enabling the industries, companies, and good jobs of the future to start, grow, and remain in the United States.

EDA'S REGIONAL OFFICES

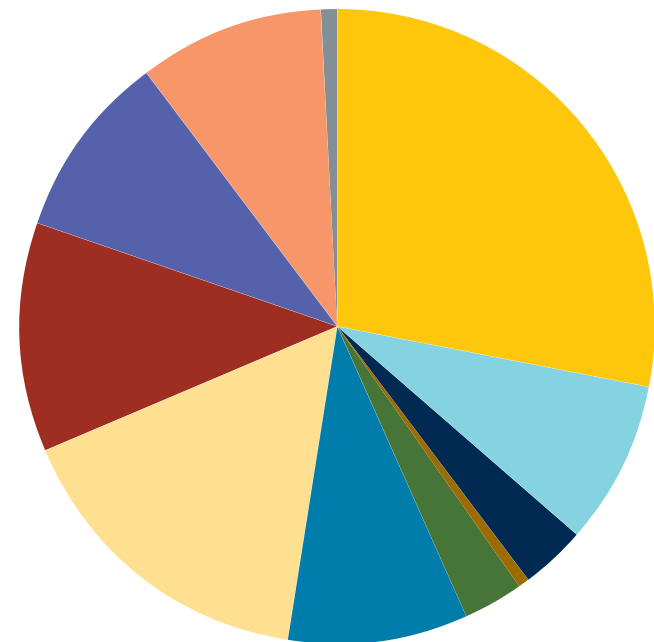


	SEATTLE	DENVER	AUSTIN	CHICAGO	PHILADELPHIA	ATLANTA
REGIONAL DIRECTOR	Sheba Person-Whitley sperson@eda.gov (206) 220-7660	Angela Belden Martinez amartinez@eda.gov (303) 844-4715	Jorge Ayala jayala@eda.gov (512) 381-8144	Susan Brehm sbrehm@eda.gov (312) 353-8143	Linda Cruz-Carnall lcruz-carnall@eda.gov (215) 597-4603	H. Philip Paradise, Jr. hparadice@eda.gov (404) 782-9102
SERVING	AK, AZ, CA, HI, ID, NV, OR, WA, AS, FM, GU, MP, MH, PW	CO, IA, KS, MO, MT, NE, ND, SD, UT, WY	AR, LA, NM, OK, TX	IL, IN, MI, MN, OH, WI	DE, DC, ME, MD, MA, NH, NJ, NY, PA, RI, VT, VA, WV, PR, VI	AL, FL, GA, KY, MS, NC, SC, TN

STATEMENT OF APPROPRIATIONS FOR FY 2023**Economic Development Assistance Programs**

(in thousands of dollars)

Program	Amount
Public Works	\$121,500
Partnership Planning	36,000
Technical Assistance	14,000
Research and Evaluation	2,000
Trade Adjustment Assistance	13,500
Economic Adjustment Assistance	39,500
Assistance to Energy Transition Communities	69,000
Regional Innovation Program Grants	50,000
Recompete Pilot Program	41,000
Regional Technology Innovation Hubs	41,000
STEM Apprenticeship Program	2,500
Total Economic Development Assistance Programs	\$430,000



PRIVATE SECTOR INVESTMENT GOALS

Section 603(b)(2) of the Public Works and Economic Development Act of 1965, as amended, requires EDA to include in its Annual Report to Congress a discussion of private sector leveraging goals set for investments awarded to (a) rural* and urban economically distressed areas; and (b) highly distressed areas.**

* Rural includes investments made in Indian tribes

** For an area to qualify as being highly distressed, one of the following criteria must be met: (a) having a 24-month unemployment rate of at least 200 percent of the national average, (b) having a per capita income not more than 60 percent of the national average, or (c) experiencing a catastrophic disaster.

Note: U.S. Department of Defense reimbursable investments and disaster supplemental investments are not included in these calculations.

The following information is provided to respond to those requirements:

- (a) Recipients of EDA awards in FY 2023, funded via either its Public Works (PW) or regular Economic Adjustment Assistance (EAA) programs, expect to leverage approximately \$1.8 billion in private investment for projects servicing rural areas and nearly \$905 million in private investment for projects servicing urban areas.
- (b) Recipients of EDA awards in FY 2023 servicing highly distressed* areas, funded via its Public Works (PW) or regular Economic Adjustment Assistance (EAA)** programs, expect to leverage more than \$2.5 billion in private investment.

NOTES

The data presented in this report represent the official grant data for awards (organized by applicant state) made by EDA in FY 2023. EDA has verified the data through a reconciliation process, conducted annually, between EDA's grant management systems and the Department of Commerce's accounting system.

As such, any previously provided information regarding EDA awards made in FY 2023 should be viewed as a snapshot of the data available at the time of the data request and are subject to any changes, corrections, or updates as reflected in this report. This includes, but is not limited to, revisions to the number, dollar amount, program classification and estimated impacts of specific grant awards.

Projects described within individual state entries are provided as illustrative examples. No project preference should be inferred from these examples. EDA uses this report to demonstrate the breadth and diversity of EDA programs and the projects which it funds.

ALABAMA

Recipient

North Baldwin Utilities

Title of Project

Water Infrastructure Construction Project

Project Location

City of Bay Minette

EDA Investment

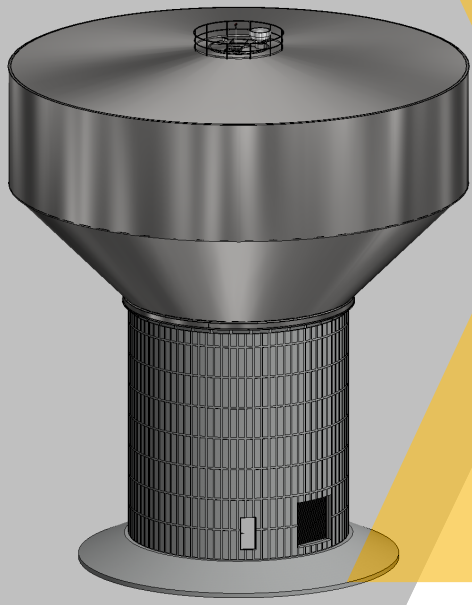
\$2,500,000

Local Match and Other Funding Sources

\$3,910,256

Brief Project Summary

This EDA investment supports the construction and installation of a new, elevated 2-million-gallon water tank in the city of Bay Minette. The project will increase service capacities to North Baldwin Utilities' 40,000 customers, and supply the needed infrastructure required to operate a new aluminum recycling facility. The project is expected to create 1,000 new jobs in southwestern Alabama.



ALASKA

Recipient

City and Borough of Yakutat

Title of Project

Small Boat Harbor Improvement Project

Project Location

City of Yakutat

EDA Investment

\$554,040

Local Match and Other Funding Sources

\$138,510

Brief Project Summary

This EDA investment supports the City and Borough of Yakutat's economy by constructing a public restroom and laundromat facility at the Small Boat Harbor. Construction of Yakutat's first sanitation facility at the harbor will allow for expansion of industries including travel, tourism, outdoor recreation, timber, and both commercial and sport fishing. The project is expected to retain 120 jobs, create 119 new jobs, and generate over \$3.9 million in private investment.



ARIZONA

Recipient

Aha Macav Power Service

Title of Project

Fort Mojave Solar System Project

Project Location

Fort Mojave Reservation/Mohave Valley

EDA Investment

\$3,998,434

Local Match and Other Funding Sources

N/A

Brief Project Summary

This EDA investment supports the capacity expansion of the Aha Macav Power Service's power station, increasing Tribal energy independence and resilience on the Fort Mojave Reservation. The improved power service will support the Tribal community businesses and provide savings on local energy bills. The project is expected to retain 10 jobs and create 38 new jobs.



ARKANSAS

Recipient

Arkansas Construction Education Foundation

Title of Project

Construction Training Project

Project Location

City of Little Rock

EDA Investment

\$1,158,000

Local Match and Other Funding Sources

\$1,158,000

Brief Project Summary

This EDA investment supports the renovation of the Arkansas Construction Education Foundation's building in Little Rock. The renovations will include state of the art apprenticeship classrooms and laboratory space, helping meet the statewide need for training and apprenticeships. The project is expected to create 250 new jobs.



CALIFORNIA

Recipient

Tule River Economic Development Corporation

Title of Project

Commercial/Industrial Park Development Project

Project Location

City of Porterville

EDA Investment

\$3,195,378

Local Match and Other Funding Sources

\$1,646,103

Brief Project Summary

This EDA investment supports the construction of a business park in the city of Porterville, which will meet the needs of the local Tule River Tribe and surrounding community. The improvements will include the construction of building pads for 11 new businesses, installation of a new well, water storage tanks, and water distribution systems. The project is expected to create 120 new jobs and generate \$1.4 million in private investment.



COLORADO

Recipient

City of Delta

Title of Project

Delta Innovation Center Project

Project Location

City of Delta

EDA Investment

\$433,240

Local Match and Other Funding Sources

\$433,240

Brief Project Summary

This EDA investment supports operational costs for the Delta Library Innovation Center in the city of Delta. The new business incubator and makerspace project will allow the city to provide staffing and resources to assist new business support and development services. Once completed, the project will help diversify the local economy and build economic resilience throughout the region. The project is also expected to create 200 new jobs and generate \$525,000 in private investment.



CONNECTICUT

Recipient

The Community Foundation for Greater New Haven

Title of Project

The Connecticut Consortium for BIPOC Technologists Project

Project Location

City of New Haven

EDA Investment

\$1,999,415

Local Match and Other Funding Sources

\$2,058,520

Brief Project Summary

This EDA investment supports the Connecticut Consortium for BIPOC Technologists project, which unites the resources of organizations that help generate capital and build capacity for underserved populations that start or currently operate science and technology businesses. The project will take a bifurcated approach to stimulating the growth of firms poised for expansion and supporting emerging entrepreneurs. The project is expected to develop a Nexus for technology firms and companies to help them become scalable and have high-growth potential.

DELAWARE

Recipient

University of Delaware

Title of Project

Spin In - Cultivating A High-Skilled Regional Workforce Project

Project Location

Statewide

EDA Investment

\$137,923

Local Match and Other Funding Sources

\$170,500

Brief Project Summary

This EDA investment supports the development and continued implementation of a University Center Economic Development Program at the University of Delaware. The program provides interdisciplinary teams of students with unique opportunities to solve real-world business problems within a real-world entrepreneurial start-up environment, while directly resulting in the development of new products, businesses with scalable opportunities, jobs, and a highly skilled workforce.

DISTRICT OF COLUMBIA

Recipient

Georgetown University

Title of Project

Georgetown Tech Ventures Project

Project Location

Washington, D.C.

EDA Investment

\$750,000

Local Match and Other Funding Sources

\$750,000

Brief Project Summary

This EDA investment supports the Georgetown Tech Ventures' implementation of a new research translation program that will focus on and enable technology-based startups to effectively contribute to the economic ecosystem in the greater Washington, D.C. region. The project is expected to increase research-and technology-based startup ventures in the local area.

FLORIDA

Recipient

Sebring Airport Authority

Title of Project

Stormwater Drainage Improvements Project

Project Location

City of Sebring

EDA Investment

\$1,830,207

Local Match and Other Funding Sources

\$457,552

Brief Project Summary

This EDA investment supports critical infrastructure upgrades to the outdated stormwater system under the airfield runways and taxiways at the Sebring Airport's Multimodal Logistics Center. The upgrades will improve the regional movement of goods and services which were previously impacted by natural disasters and the COVID-19 pandemic. The project is expected to retain 315 jobs, create 214 new jobs, and generate \$36 million in private investment.



GEORGIA

Recipient

Wiregrass Georgia Technical College

Title of Project

Training Center Construction Project

Project Location

City of Fitzgerald

EDA Investment

\$742,180

Local Match and Other Funding Sources

\$318,078

Brief Project Summary

This EDA investment supports the Wiregrass Georgia Technical College with enhancing its truck driver training program by constructing an access road to support truck driver training workforce development in southern Georgia. The project is expected to retain 12 jobs, create 223 new jobs, and generate \$40 million in private investment.



GUAM

Recipient

Government of Guam Department of Administration

Title of Project

Pharmaceutical Manufacturing Feasibility Study

Project Location

Asan

EDA Investment

\$300,800

Local Match and Other Funding Sources

N/A

Brief Project Summary

This EDA investment supports the Guam Department of Administration with conducting a feasibility study to assess Guam's capacity to manufacture pharmaceuticals, including medical equipment and supplies on the island. The project is expected to provide a roadmap to attract pharmaceutical companies and advance economic resiliency, which will help establish a new industry in Guam that will open doors for job creation and attract further investments.



HAWAII



Recipient

Natural Energy Laboratory of Hawaii Authority (NELHA)

Title of Project

Aquaculture Incubator Project

Project Location

Kailua-Kona

EDA Investment

\$656,000

Local Match and Other Funding Sources

\$164,000

Brief Project Summary

This EDA amendment supports the Natural Energy Laboratory of Hawaii Authority (NELHA) with extending a two-year pilot accelerator program and developing an incubator program along with associated marketing materials and tools at HOST Park in Kailua-Kona. The project, inclusive of the original award and this FY 2023 amendment, is expected to create 250 new jobs and generate \$40 million in private investment.

IDAHO

Recipient

Valley County, Idaho

Title of Project

Abstein Road Bridge Replacement Project

Project Location

Village of Yellow Pine

EDA Investment

\$850,000

Local Match and Other Funding Sources

\$250,000

Brief Project Summary

This EDA amendment supports the replacement of the Abstein Road Bridge, which serves the remote village of Yellow Pine. Yellow Pine is a hub for tourism and recreation in central Idaho. In addition to supporting tourism, the Abstein Road Bridge also allows Yellow Pine's domestic water supply to be transported in from a well on the Salmon River. The project is expected to retain 50 jobs and create 80 new jobs.



Recipient

Title of Project

Project Location

EDA Investment

Local Match and Other Funding Sources

Brief Project Summary

This EDA investment supports the Kaskaskia Regional Port District with constructing an access road and additional space at its No. 2 Terminal in the city of Red Bud. These improvements will support freight transportation, which is a major part of the local economy. The project is expected to create 50 new jobs and generate \$20 million in private investment.



INDIANA

Recipient

Cass County

Title of Project

Agri-Business Park Construction Project

Project Location

City of Logansport

EDA Investment

\$1,751,658

Local Match and Other Funding Sources

\$1,422,130

Brief Project Summary

This EDA investment supports the reconstruction of two roads located at the entrance of the Cass County Agri-Business Industrial Park in the city of Logansport. These road infrastructure upgrades allow existing and future businesses at the park to move heavy agriculture equipment, improving business operations and promoting industrial growth. The project is expected to create 200 new jobs and generate \$68.5 million in private investment.



IOWA

Recipient

City of Dubuque

Title of Project

Dubuque Disaster Recovery Project

Project Location

City of Dubuque

EDA Investment

\$7,700,000

Local Match and Other Funding Sources

\$19,012,000

Brief Project Summary

This EDA investment supports the construction of the Bee Branch Stormwater Pumping Station in the city of Dubuque. The project will help in rebuilding following extensive wildfires and flooding in the area, laying the groundwork for long-term economic vitality and advance economic resiliency throughout the region. The project is expected to create 150 new jobs and generate \$16.5 million in private investment.



KANSAS

Recipient

Pittsburg State University

Title of Project

Plastics Circularity as a Tool for Economic Diversification Project

Project Location

City of Pittsburg

EDA Investment

\$99,772

Local Match and Other Funding Sources

\$99,772

Brief Project Summary

This EDA investment supports Pittsburg State University with conducting a feasibility study that will explore the viability of creating a high-tech plastic recycling industry and related workforce development programs in the area around the city of Pittsburg. The project is expected to help enhance future economic sustainability and advance economic resiliency throughout the region.



KENTUCKY

Recipient

Muhlenberg County Fiscal Court

Title of Project

Building Renovation Project

Project Location

City of Greenville

EDA Investment

\$2,153,010

Local Match and Other Funding Sources

\$569,240

Brief Project Summary

This EDA investment supports renovations at the Muhlenberg County Opportunity Center, which provides vocational evaluation, job training, and employment to adults with disabilities in the city of Greenville. The renovations will allow the Center to expand its training program, providing more individuals with disabilities the opportunity to receive the skills necessary to transition to successful employment opportunities. The project is expected to create 30 new jobs.



LOUISIANA

Recipient

Tunica-Biloxi Tribe of Louisiana

Title of Project

Garan Building Renovation Project

Project Location

City of Marksville

EDA Investment

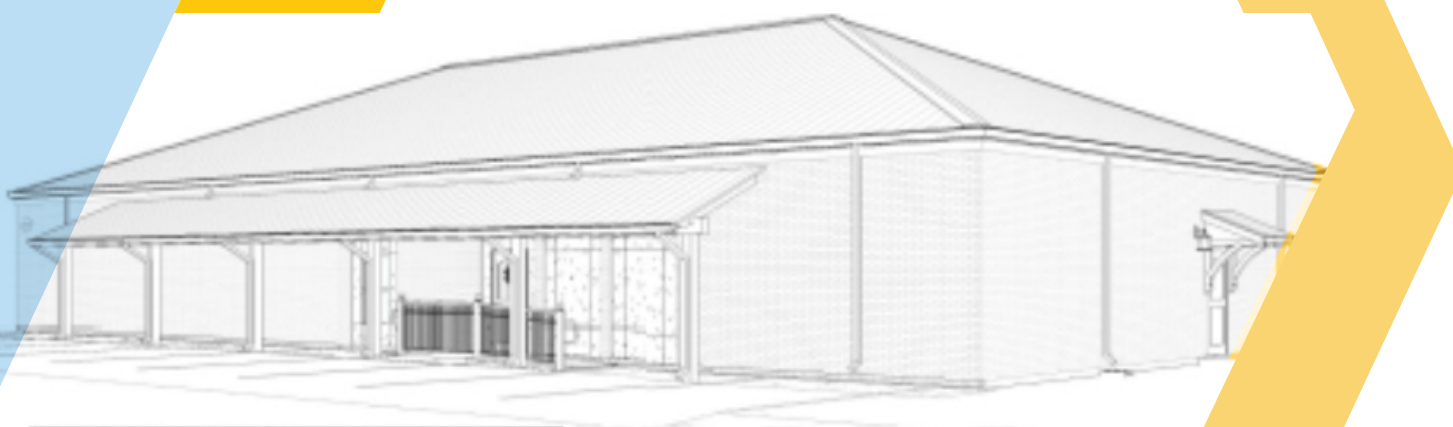
\$1,600,000

Local Match and Other Funding Sources

\$250,000

Brief Project Summary

This EDA investment supports the Tunica-Biloxi Tribe of Louisiana with making renovations to the abandoned Garan building in Marksville. The renovated facility will serve as a multi-enterprise center for sewing fabrication and recycling of rare earth materials, creating high quality jobs for the residents in the Marksville area. The project is expected to create 150 new jobs and generate close to \$1.4 million in private investment.



MAINE

Recipient

Town of Madawaska

Title of Project

Madawaska Downtown Redevelopment Project

Project Location

Town of Madawaska

EDA Investment

\$2,012,000

Local Match and Other Funding Sources

\$503,000

Brief Project Summary

This EDA investment supports utility improvements in the Town of Madawaska's commercial plaza. The project will help improve buildings and parking lots in the plaza and make the downtown area more walkable. The project is expected to create 32 new jobs and generate more than \$14 million in private investment.



MARYLAND

Recipient

Latino Economic Development Center

Title of Project

Anti-Displacement Technical Assistance for Purple Line Businesses Project

Project Location

City of Silver Spring

EDA Investment

\$100,000

Local Match and Other Funding Sources

\$100,000

Brief Project Summary

This EDA investment supports small business workshops and one-on-one coaching for Silver Spring businesses affected by the construction of a new light rail line. Recipients will require training, technical assistance and other small business and personal financial assistance to offset the environmental change brought on by the construction of the light rail line. The project is expected to provide resources to generate an environment that can serve as a catalyst for unprecedented regional economic growth.



MASSACHUSETTS

Recipient

Berkshire Regional Planning Commission

Title of Project

Workforce Training Project

Project Location

City of Pittsfield

EDA Investment

\$914,465

Local Match and Other Funding Sources

\$330,000

Brief Project Summary

This EDA investment supports the launch of the Berkshire Innovation Center (BIC) Manufacturing Academy, which will serve as a hub for the growing advanced manufacturing ecosystem in Western Massachusetts. The BIC Manufacturing Academy will provide technology bootcamps, regional apprenticeship program development, and will partner with local education centers and employers. The project is expected to retain 153 jobs and create 135 new jobs.



MICHIGAN

Recipient

Charter Township of Mundy and Genesee County Road Commission

Title of Project

Industrial Park Expansion Project

Project Location

City of Flint

EDA Investment

\$2,000,000

Local Match and Other Funding Sources

\$2,502,393

Brief Project Summary

This EDA investment supports Mundy Township's upgrades of critical water and road infrastructure, to serve industrial users' requirements for water pressure and truck access in Genesee County. The project is expected to retain 50 jobs, create 400 new jobs, and generate \$30 million in private investment.



MINNESOTA

Recipient

City of Oak Park Heights

Title of Project

Municipal Well Construction Project

Project Location

City of Oak Park Heights

EDA Investment

\$1,485,000

Local Match and Other Funding Sources

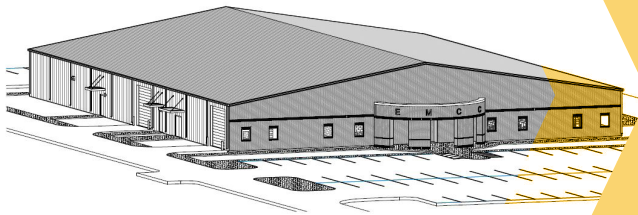
\$1,485,000

Brief Project Summary

This EDA investment supports the construction of a new municipal well to ensure an uninterrupted water supply to industrial firms in the city of Oak Park Heights. The project will help the city meet industrial demand for water services, recover from a coal plant closure, promote job retention, and bolster economic resilience. The project is expected to retain more than 1,000 jobs.

MISSISSIPPI

Schematic Design



East Mississippi Community College
New Industrial Training Facility

1512 Kemper Street
Scooba, MS 39358

Recipient

East Mississippi Community College

Title of Project

Industrial Training Facility Construction Project

Project Location

City of Scooba

EDA Investment

\$3,000,000

Local Match and Other Funding Sources

\$3,944,586

Brief Project Summary

This EDA investment supports the construction of a new Industrial Training Facility on the campus of East Mississippi Community College in the city of Scooba. The new facility will extend workforce training opportunities and develop a talent pipeline that will strengthen local economies throughout East Central Mississippi. The project is expected to create 205 new jobs and save 51 jobs. It is also expected to generate \$750,000 in private investment.

MISSOURI

Recipient

The Curators of the University of Missouri

Title of Project

University of Missouri-Kansas City Innovation Center Project

Project Location

City of Kansas City

EDA Investment

\$200,000

Local Match and Other Funding Sources

\$1,000,000

Brief Project Summary

This EDA investment supports the first of five years of the University of Missouri-Kansas City's Innovation Center, which leads efforts to fill defined gaps in the Kansas City entrepreneurial ecosystem. The University Center program will focus on building regional collaborations with universities, government, community, and business leaders to create an infrastructure for engagement between entrepreneurial businesses and mid- to large-sized corporations.



MONTANA

Recipient

University of Montana

Title of Project

University of Montana Center for Rural Economic Development Project

Project Location

City of Missoula

EDA Investment

\$148,000

Local Match and Other Funding Sources

\$744,000

Brief Project Summary

This EDA investment supports the first year of the University of Montana's Center for Rural Economic Development. Over five years, the University Center Program will broaden the reach of the University of Montana's "Accelerate Montana" program to include distressed rural and tribal communities and to facilitate development of sustainable high growth entrepreneurial ecosystems. The project is expected to leverage applied research and technical assistance to help communities capitalize on economic development opportunities.

ACCESS TO FINANCE IN MONTANA

A Study of the Funding Landscape for
Entrepreneurs and Small Businesses

Part 1: Survey of Funders

2023

Photo by Erika Spaulding
Missoula Makers Collective

NEBRASKA

Recipient

Board of Regents of the University of Nebraska

Title of Project

Omaha Virtual Reality Pipeline Project

Project Location

City of Omaha

EDA Investment

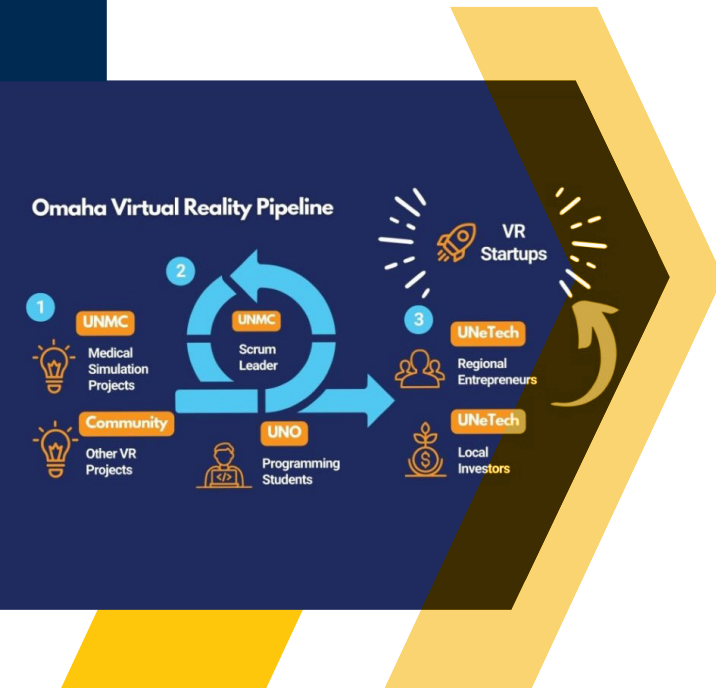
\$637,710

Local Match and Other Funding Sources

\$638,544

Brief Project Summary

This EDA investment supports the establishment of the Omaha Virtual Reality Pipeline (OVRP), a regional coalition that aims to accelerate technology workforce training and improve access to related business opportunities. The coalition, led by UNeTech, leverages the collaboration of local universities, entrepreneurial support organizations, and local government, to support local startups by providing resources and management to scale virtual reality applications. The project is expected to help accelerate technology entrepreneurship by increasing inclusive access to entrepreneurial support and startup capital.



NEVADA

Recipient

City of Las Vegas

Title of Project

Historic Jackson Avenue Redevelopment Project

Project Location

City of Las Vegas

EDA Investment

\$1,311,480

Local Match and Other Funding Sources

\$327,870

Brief Project Summary

This EDA investment supports the city of Las Vegas with providing training and technical assistance to business owners on Jackson Avenue, along with funding physical property redevelopment as part of an ongoing effort to revitalize the Westside neighborhood of Las Vegas. The project is expected to create 82 new jobs and generate \$35.5 million in private investment.



NEW HAMPSHIRE

Recipient

Rockingham Economic Development Corporation

Title of Project

Economic Development District Planning

Project Location

Town of Raymond

EDA Investment

\$70,000

Local Match and Other Funding Sources

\$70,000

Brief Project Summary

This EDA planning investment supports the continued development and implementation of a comprehensive economic development strategy (CEDS) for the region served by the Rockingham Economic Development Corporation, which is comprised of 37 municipalities in Rockingham County, plus five cities and towns in eastern Hillsborough County. The CEDS process is designed to bring together the public and private sectors in the creation of an economic development roadmap to diversify and strengthen the regional economy of southeastern New Hampshire.

NEW JERSEY

Recipient

The Enterprise Center

Title of Project

Infrastructure Innovation Business Opportunities Center Project

Project Location

City of Newark

EDA Investment

\$960,000

Local Match and Other Funding Sources

\$240,000

Brief Project Summary

This EDA investment supports the launch of the Enterprise Center's Infrastructure Innovations and Business Opportunities Center, which connects socially and economically disadvantaged contractors and businesses to large scale infrastructure projects. In addition, the Enterprise Center has connected with major local employers to create new initiatives for businesses that will stimulate economic growth and help the region capitalize on new opportunities in workforce development. The project is expected to create 100 new jobs and generate \$50 million in private investment.



NEW MEXICO

Recipient

Village of Milan

Title of Project

Milan Industrial Park Mill Road Upgrade Project

Project Location

City of Milan

EDA Investment

\$2,739,000

Local Match and Other Funding Sources

\$684,750

Brief Project Summary

This EDA investment supports the Village of Milan with making roadway infrastructure improvements at the Milan Industrial Park, located along Mill Road in Cibola County, New Mexico, which is part of a strategy to attract new jobs to mitigate the loss of coal-related jobs. The project will allow committed beneficiaries to locate within the park and attract additional businesses to the area. The project is expected to create 54 new jobs and generate \$3.2 million in private investment.



NEW YORK

Recipient

Niagara University

Title of Project

Workforce Training Center Construction Project

Project Location

City of Niagara Falls

EDA Investment

\$1,306,800

Local Match and Other Funding Sources

\$326,700

Brief Project Summary

This EDA investment supports the renovation of a former church into a workforce training center in Niagara County. The new space will include academic classrooms, small meeting spaces, a technology center, and faculty offices. The improvements will provide an accessible facility to help bolster workforce development in the region. The project is expected to retain 62 jobs, create 322 new jobs, and generate \$195,930 in private investment.

NORTH CAROLINA

Recipient

Guilford Technical Community College

Title of Project

Driving into the Future Building Construction Project

Project Location

City of Greensboro

EDA Investment

\$1,741,378

Local Match and Other Funding Sources

\$2,612,068

Brief Project Summary

This EDA investment supports the planning and construction of a truck driver training facility at Guilford Technical Community College, allowing more students to be trained or retrained for opportunities in the growing logistics sector. The project is expected to create 1,782 new jobs.



NORTH DAKOTA

Recipient

University of North Dakota

Title of Project

University Center at the University of North Dakota Project

Project Location

City of Grand Forks

EDA Investment

\$100,000

Local Match and Other Funding Sources

\$500,000

Brief Project Summary

This EDA investment supports the first of five years of the University of North Dakota's Center for Autonomous Systems Innovation. This University Center supports expansion in the autonomous systems innovation cluster in northeastern North Dakota, assisting with the commercialization of autonomous systems innovations and developing a workforce for the sector through internships and other experiential learning activities.



NORTHERN MARIANA ISLANDS

Recipient

Northern Marianas College

Title of Project

Workforce Development and Training Center Project

Project Location

Island of Saipan

EDA Investment

\$2,740,000

Local Match and Other Funding Sources

N/A

Brief Project Summary

This EDA amendment supports the construction of Northern Marianas College's Workforce Development Training Center. The project is expected to help increase employment opportunities, support resiliency against future natural disasters, spur private investment, and provide long-term economic stability.



Recipient

Adams County Regional Water District

Title of Project

Winchester Industrial Park Water Storage Tank Project

Project Location

Village of Winchester

EDA Investment

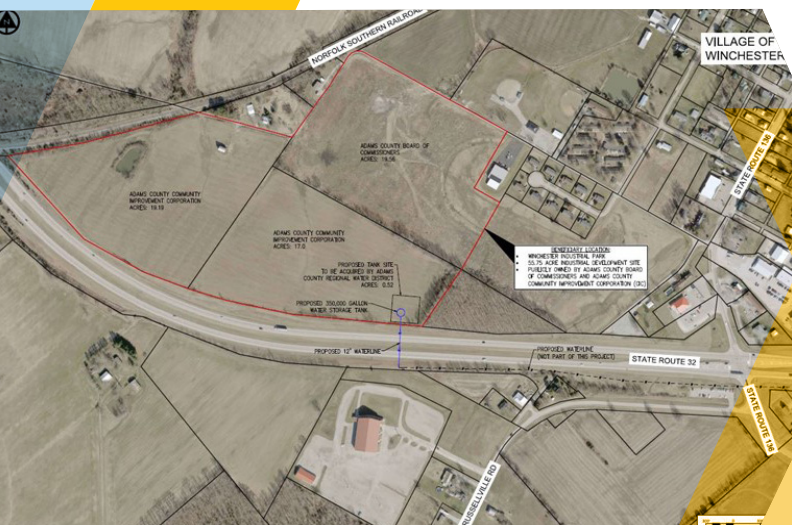
\$2,000,000

Local Match and Other Funding Sources

\$500,000

Brief Project Summary

This EDA investment supports upgrades to water infrastructure in the Winchester Industrial Park in Adams County. The improved water infrastructure will spur new business growth on 55 acres at the Industrial Park, boosting the resilience of an economic region which has been impacted by the downturn in the coal industry. The project is expected to retain 84 jobs, create 150 new jobs, and generate \$6 million in private investment.



OKLAHOMA

Recipient

Cherokee Nation

Title of Project

Cherokee Nation Workforce Development Project

Project Location

City of Tahlequah

EDA Investment

\$1,400,000

Local Match and Other Funding Sources

N/A

Brief Project Summary

This EDA investment supports the expansion of Cherokee Nation's building trade, lineman, and fiber technician training programs in the city of Tahlequah, with a special focus on considerably underserved Tribe members. The project will help drive economic development and expand economic opportunities throughout the region. The project is expected to create 72 new jobs.



OREGON

Recipient

Port of Hood River

Title of Project

Waterfront Transportation and Utilities Infrastructure Improvements Project

Project Location

City of Hood River

EDA Investment

\$1,981,419

Local Match and Other Funding Sources

\$1,708,127

Brief Project Summary

This EDA investment supports the construction of a new road and the relocation and reconfiguration of another road to increase the capacity of the Port of Hood River. The investment will also support the installation of water, electrical, gas, and communications utilities, along with the construction of a public transit hub. The project is expected to create 7 new jobs and generate \$390,000 in private investment.



PENNSYLVANIA

Recipient

Pennsylvania College of Technology

Title of Project

ACC – Training Centers Construction Project

Project Location

City of Williamsport

EDA Investment

\$1,989,210

Local Match and Other Funding Sources

\$1,989,210

Brief Project Summary

This EDA investment supports the Pennsylvania College of Technology in renovating the Building Technology Center and construction of the Clean Energy Center House to support workforce development in Williamsport, Pennsylvania. The project will support the college's ability to develop and train skilled workers to increase capacity, developing workers who can compete for standard skilled labor positions and new emerging skills positions, including those supporting the region's strong eco-manufacturing sector. Once completed, the project will help guide the region towards creating opportunities for high-wage jobs and increasing access to higher education throughout the region.

PUERTO RICO

Recipient

Puerto Rico Science, Technology and Research Trust

Title of Project

A Life Sciences Innovation Incubator Project

Project Location

San Juan

EDA Investment

\$648,104

Local Match and Other Funding Sources

\$648,104

Brief Project Summary

This EDA investment supports the establishment of the BioLeap: A Life Sciences Innovation Incubator project, to increase economic development through innovation and entrepreneurship in the life sciences sector. As the only resource for life sciences entrepreneurs on the island, BioLeap focuses on closing the gap between cutting-edge local scientific research and its commercialization, thus advancing the establishment of local, inclusive innovation ecosystem. The project is expected to provide a supportive environment where life sciences entrepreneurs can structure their businesses, launch a functional prototype, and develop patentable technologies with the goal of commercialization for exports worldwide.

RHODE ISLAND

Recipient

Town of Narragansett

Title of Project

Water Facility Expansion Study Project

Project Location

Town of Narragansett

EDA Investment

\$339,456

Local Match and Other Funding Sources

\$84,864

Brief Project Summary

This EDA investment supports the Town of Narragansett with developing a wastewater facility expansion study, to evaluate and provide the recommended improvements required for expanding wastewater treatment capacity at Narragansett's Scarborough Treatment Facility. Establishing a wastewater treatment facility that can serve more processing capacity will increase regional and national food security and create a more sustainable seafood supply chain. The project is expected to support job creation and retention, attract private investment, and advance economic resiliency throughout the region.

SOUTH CAROLINA

Recipient

Horry-Georgetown Technical College

Title of Project

Marine Technology Center Construction Project

Project Location

City of Conway

EDA Investment

\$8,000,000

Local Match and Other Funding Sources

\$4,650,000

Brief Project Summary

This EDA investment supports the construction of a new building on Horry Georgetown Technical College's campus to house a new boat-building technology program and expand the college's outboard marine technology program. The project is expected to create 473 new jobs and generate \$74.9 million in private investment.



HGTC Marine Technology Center

SOUTH DAKOTA

Recipient

City of Madison

Title of Project

Lakeview Industrial Park Construction Project

Project Location

City of Madison

EDA Investment

\$3,593,520

Local Match and Other Funding Sources

\$898,380

Brief Project Summary

This EDA investment supports the construction of infrastructure improvements to promote business expansion at the Lakeview Industrial Park in Lake County. These improvements will benefit 47 acres of undeveloped property, which can provide opportunities for the regional economy to continue diversifying and expanding in the wake of natural disasters occurring in 2022. The project is expected to create 100 new jobs and generate \$10 million in private investment.



TENNESSEE

Recipient

City of Etowah

Title of Project

Water Improvements Project

Project Location

City of Etowah

EDA Investment

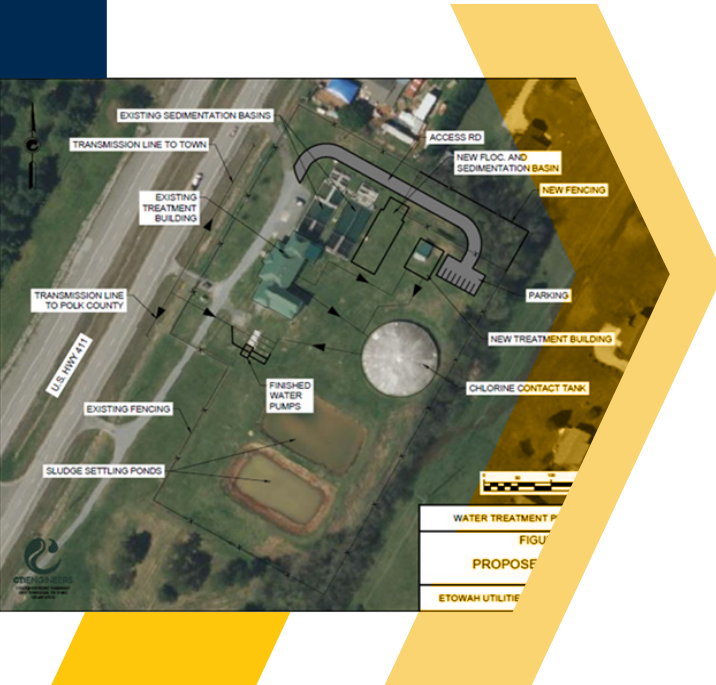
\$2,000,000

Local Match and Other Funding Sources

\$6,085,000

Brief Project Summary

This EDA investment supports the renovation and expansion of the Etowah Water Treatment Plant. These improvements will facilitate future industrial and commercial growth in the area, including supporting a new electrical vehicle battery manufacturer. The project is expected to create 120 new jobs and generate \$600 million in private investment.



TEXAS

Recipient

The Multi-Assistance Center at Morgan's Wonderland

Title of Project

Multi-Assistance Center Dental Expansion Project

Project Location

City of San Antonio

EDA Investment

\$3,459,000

Local Match and Other Funding Sources

\$864,750

Brief Project Summary

This EDA investment supports the Multi-Assistance Center's Dental Expansion project to fund construction of an expanded community-based dental clinic in San Antonio. Once completed, the project will help enhance future economic sustainability and advance economic resiliency throughout the region. The project is expected to retain 28 jobs, create 28 new jobs, and generate \$47.5 million in private investment.



UTAH

Recipient

Carbon County

Title of Project

Aviation Campus Workforce Development Project

Project Location

City of Price

EDA Investment

\$1,381,500

Local Match and Other Funding Sources

\$507,500

Brief Project Summary

This EDA investment supports the construction of an aircraft maintenance technician campus training facility and hangar to address the local and regional workforce training needs in the city of Price. Developing the program will support the transition of displaced coal workers into other high-paying occupations that will further serve regional growth. The project is expected to create 75 new jobs.



VERMONT

Recipient

Northeastern Vermont Development Association (NVDA)

Title of Project

InnovateNEK Project

Project Location

City of St. Johnsbury

EDA Investment

\$749,947

Local Match and Other Funding Sources

\$751,480

Brief Project Summary

This EDA investment supports the establishment of the InnovateNEK project to develop a tech ecosystem that improves awareness, access to, and engagement with the region's tech startup ecosystem. The project will also increase translation of emerging technology solutions into high-growth tech startups by increasing support for idea-stage tech entrepreneurs and accelerate and invest in the region's most promising tech startups. The project is expected to help transform Vermont's most rural economy from suffering from the loss of traditional manufacturing jobs to driving scalable tech entrepreneurship, investment, and job creation throughout the region.

VIRGINIA

Recipient

SOVA Innovation Hub

Title of Project

Innovation Space Upgrade Project

Project Location

City of South Boston

EDA Investment

\$1,255,556

Local Match and Other Funding Sources

\$492,389

Brief Project Summary

This EDA investment supports SOVA Innovation Hub Corporation with the renovation of a 13,000 SF building to create a digital makerspace, community spaces, coworking offices, and outdoor spaces in southern Virginia. The spaces will host educational public programs on computer science and related skills, increasing economic equity in Halifax County. The project is expected to retain 26 jobs, create 104 new jobs, and generate \$1.1 million in private investment.

WASHINGTON

Recipient

Port of Chehalis

Title of Project

Southwest Washington Grain Project

Project Location

City of Chehalis

EDA Investment

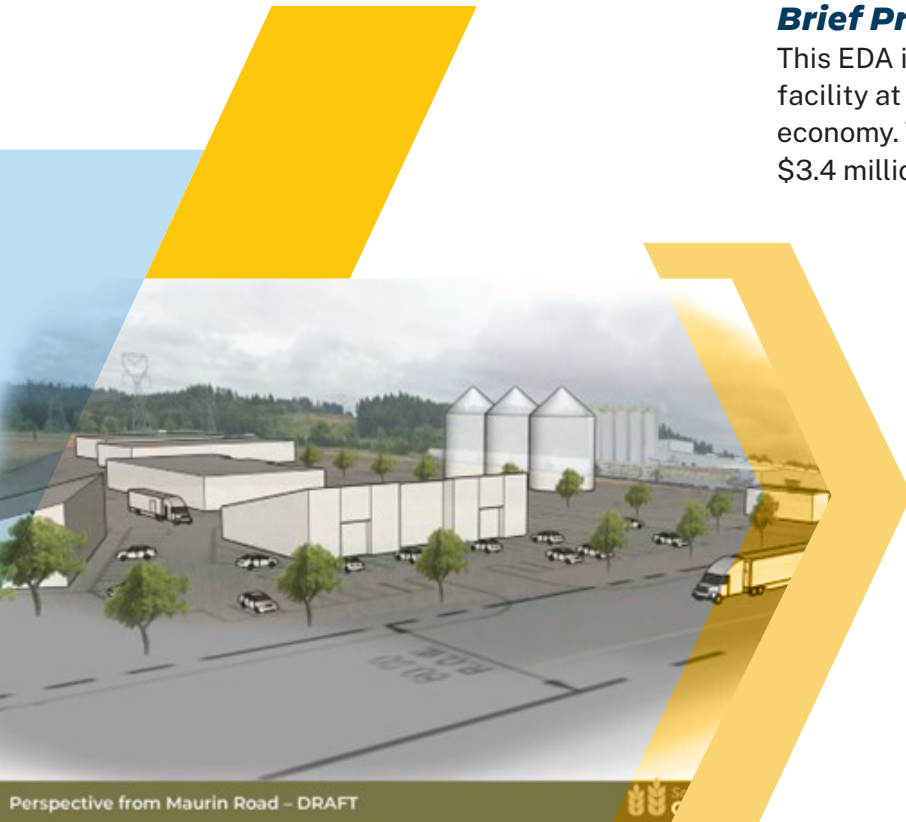
\$3,141,029

Local Match and Other Funding Sources

\$1,766,829

Brief Project Summary

This EDA investment supports the construction of a grain storage and rail transload facility at the Port of Chehalis, expanding the capacity of the region's agricultural economy. The project is expected to retain eight jobs, create 46 new jobs, and generate \$3.4 million in private investment.



WEST VIRGINIA

Recipient

Business Development Corporation of the Northern Panhandle

Title of Project

Beech Bottom Industrial Complex Phase II Project

Project Location

City of Weirton

EDA Investment

\$3,126,336

Local Match and Other Funding Sources

\$781,585

Brief Project Summary

This EDA investment supports electrical upgrades, solar panel installation, and storm drain improvements at the Beech Bottom Industrial Complex. The project will enable current tenants to expand, as well as provide an additional space for potential new businesses. The solar panel installation will also help reduce carbon emissions. The project is expected to retain 60 jobs, create 160 new jobs, and generate \$18 million in private investment.



WISCONSIN

Recipient

Lac du Flambeau Band of Lake Superior Chippewa Indians

Title of Project

Simpson Electric Molding Facility Project

Project Location

Town of Lac du Flambeau

EDA Investment

\$2,638,075

Local Match and Other Funding Sources

N/A

Brief Project Summary

This EDA investment supports the construction of a molding plant at the Lac du Flambeau Industrial Park. The molding facility will provide good manufacturing jobs on the Reservation, diversifying the economy and making it more resilient. The project is expected to retain 12 jobs, create 72 new jobs, and generate \$500,000 in private investment.



WYOMING

Recipient

Western Wyoming Community College District

Title of Project

Skilled Healthcare Workforce Facility Project

Project Location

City of Rock Springs

EDA Investment

\$3,000,000

Local Match and Other Funding Sources

\$5,391,075

Brief Project Summary

This EDA investment supports the construction of a Health Science Wing on the main campus of Western Wyoming Community College in the city of Rock Springs. The new addition and renovated classrooms will increase enrollment and completions for the college's health science programs, bolstering job creation, diversifying the regional economy, and advancing economic resiliency in an area that has been impacted by the decline in the coal industry. The project is expected to create 1,500 new jobs.



EDA'S FY 2023 FINANCIAL HIGHLIGHTS

In Fiscal Year 2023, EDA invested approximately \$403 million in 590 locally-driven economic development projects nationwide.

These investments included approximately \$135 million in Public Works and Economic Adjustment Assistance (regular) construction projects that communities identified as critical infrastructure enhancements to ensure long-term competitiveness. Recipients report that these investments are expected to create or retain 17,513 jobs and generate approximately \$2.7 billion in private investment. Additionally, these investments incentivized over \$118 million in local matching investments.

EDA also supported economic development planning that will help communities make good decisions regarding long-term economic growth. In FY2023, EDA made 202 awards to regions and communities, providing them with approximately \$33.9 million to develop such plans."

Recipients of EDA awards in FY 2023, funded via either its Public Works (PW) or regular Economic Adjustment Assistance (EAA) programs, expect to leverage approximately \$1.8 billion in private investment for projects servicing rural areas and close to \$905 million in private investment for projects servicing urban areas.

Recipients of EDA awards in FY 2023 servicing highly distressed* areas, funded via either its Public Works (PW) or regular Economic Adjustment Assistance (EAA)** programs, expect to leverage over \$2.5 billion in private investment.

* For an area to qualify as being highly distressed, one of the following criteria must be met: (a) a 24-month unemployment rate of at least 200 percent of the national average, (b) per capita income not more than 60 percent of the national average, or (c) a catastrophic disaster.

** Inclusive of Revolving Loan Funds (RLF)

SUMMARY OF EDA FY 2023 AWARDS (INCLUDING SUPPLEMENTAL* AWARDS)

States/Territories	Project Number	Applicant	City	EDA Program	EDA Funding	Match**
Alabama	40107845	Craig Field Airport and Industrial Authority	Selma	Public Works	\$ 2,437,680	\$ 609,420
Alabama	40107867	North Baldwin Utilities	Bay Minette	Public Works	\$ 2,500,000	\$ 3,910,256
Alabama	40607865	Jackson County	Scottsboro	Technical Assistance	\$ 150,000	\$ 50,000
Alabama	46907855	Alabama Tombigbee Regional Commission	Camden	Economic Adjustment Assistance	\$ 500,000	\$ -
Alabama	47907854	Vivian's Door	Mobile	Economic Adjustment Assistance	\$ 729,560	\$ 182,390
Alabama	4010742501	City of Phenix	Phenix City	Public Works	\$ 3,758,965	\$ 3,758,967
Alabama	4790761701	Mobile Airport Authority	Mobile	Economic Adjustment Assistance	\$ 2,500,000	\$ 1,358,683
Alabama	4790777401	City of Oxford	Oxford	Economic Adjustment Assistance	\$ 2,726,409	\$ 555,824
Alabama	ED22ATL3030035	Auburn University	Auburn	Technical Assistance	\$ 109,618	\$ 109,618
Alabama	ED23ATLOG0044	Utilities Board of the City of Tuskegee	Tuskegee	Public Works	\$ 2,642,744	\$ 1,132,604
Alabama	ED23ATL3020001	Alabama-Tombigbee Regional Commission	Camden	Planning	\$ 210,000	\$ 52,500
Alabama	ED23ATL3020003	South Central Alabama Development Commission	Montgomery	Planning	\$ 210,000	\$ 90,000
Alabama	ED23ATL3020005	Regional Planning Commission of Greater Birmingham	Birmingham	Planning	\$ 210,000	\$ 210,000
Alabama	ED23ATL3020011	Southeast Alabama Regional Planning and Development Commission	Dothan	Planning	\$ 210,000	\$ 90,000
Alabama	ED23ATL3020012	Northwest Alabama Council of Local Governments	Muscle Shoals	Planning	\$ 210,000	\$ 140,000
Alabama	ED23ATL3020015	Central Alabama Regional Planning and Development Commission	Montgomery	Planning	\$ 210,000	\$ 210,000
Alabama	ED230IE0G0085	Southern Research Institute	Birmingham	Build 2 Scale	\$ 748,469	\$ 965,951
Alaska	7010743801	Organized Village of Kake	Kake	Public Works	\$ 519,418	\$ 100,000
Alaska	7010776201	Native Village of Ekwok	Ekwok	Public Works	\$ 460,477	\$ 863,926
Alaska	7790763801	Matanuska-Susitna Borough	Palmer	Economic Adjustment Assistance	\$ 1,000,000	\$ 250,000
Alaska	7790792801	City and Borough of Yakutat	Yakutat	Economic Adjustment Assistance	\$ 554,040	\$ 138,510
Alaska	ED22SEA3020019	Kawerak, Inc.	Nome	Planning	\$ 17,500	\$ -
Alaska	ED22SEA3030046	University of Alaska Anchorage	Anchorage	Technical Assistance	\$ 135,000	\$ 135,000
Alaska	ED23SEA0G0008	Tanana Chiefs Conference	Fairbanks	Economic Adjustment Assistance	\$ 150,000	\$ -
Alaska	ED23SEA3020011	Prince William Sound Economic Development District	Cordova	Planning	\$ 210,000	\$ 210,000
Alaska	ED23SEA3030026	Central Council of Tlingit and Haida Indian Tribes of Alaska	Juneau	Technical Assistance	\$ 90,000	\$ -
Arizona	70107933	Fort Mojave Aha Macav Power Service	Mohave Valley	Public Works	\$ 3,998,434	\$ -
Arizona	ED22SEA3030044	University of Arizona	Tucson	Technical Assistance	\$ 100,000	\$ 100,000
Arizona	ED230IE0G0148	Community Investment Corporation	Tucson	Build 2 Scale	\$ 300,000	\$ 300,000
Arizona	ED230IE0G0163	Arizona Regional Economic Development Foundation	Sierra Vista	Build 2 Scale	\$ 298,504	\$ 298,504
Arizona	ED23SEA0G0088	City of St. Johns	St. Johns	Economic Adjustment Assistance	\$ 355,000	\$ 106,000
Arizona	ED23SEA0G0093	Dine College	Tsaile	Economic Adjustment Assistance	\$ 386,000	\$ -
Arizona	ED23SEA0G0099	Dine College	Tsaile	Economic Adjustment Assistance	\$ 350,000	\$ 34,000

* All supplemental Awards are funded under the Economic Adjustment Assistance (EAA) Program

** Match includes Local(Applicant) match, State, and other federal funding, where applicable

States/Territories	Project Number	Applicant	City	EDA Program	EDA Funding	Match**
Arizona	ED23SEA3020016	Southeastern Arizona Governments Organization	Bisbee	Planning	\$ 225,000	\$ 96,429
Arizona	ED23SEA3020017	Northern Arizona Council of Governments	Flagstaff	Planning	\$ 225,000	\$ 56,250
Arizona	ED23SEA3030006	The International Sonoran Desert Alliance	Ajo	Technical Assistance	\$ 70,000	\$ 27,500
Arkansas	80105710	Pulaski County	Little Rock	Public Works	\$ 3,000,000	\$ 952,690
Arkansas	80105714	Shorter College Inc	North Little Rock	Public Works	\$ 1,275,000	\$ 600,000
Arkansas	80105720	Arkansas Construction Education Foundation	Little Rock	Public Works	\$ 1,158,000	\$ 1,158,000
Arkansas	80105721	Marble Falls Sewer Improvement District	Marble Falls	Public Works	\$ 1,000,000	\$ 1,924,960
Arkansas	8790530301	Lawrence County	Walnut Ridge	Economic Adjustment Assistance	\$ 300,000	\$ 26,950
Arkansas	8790535601	Western Arkansas Intermodal Authority	Fort Smith	Economic Adjustment Assistance	\$ 125,000	\$ 31,250
Arkansas	ED23AUS0G0095	University of Arkansas – Fort Smith	Fort Smith	Technical Assistance	\$ 130,000	\$ 130,000
Arkansas	ED23AUS0G0106	University of Arkansas System DBA Division of Agriculture of the University of Arkansas	Little Rock	Technical Assistance	\$ 130,000	\$ 130,000
Arkansas	ED23AUS3020001	Northwest Arkansas Economic Development District, Inc.	Harrison	Planning	\$ 234,800	\$ 100,750
Arkansas	ED23AUS3020002	West Central Arkansas Planning and Development District	Hot Springs National Park	Planning	\$ 210,000	\$ 90,000
Arkansas	ED23AUS3020003	White River Planning and Development District Inc.	Batesville	Planning	\$ 210,000	\$ 90,000
Arkansas	ED23AUS3020004	Western Arkansas Planning and Development District	Fort Smith	Planning	\$ 210,000	\$ 210,000
Arkansas	ED23AUS3020005	Southeast Arkansas Economic Development District, Inc.	Pine Bluff	Planning	\$ 210,000	\$ 210,000
Arkansas	ED23AUS3020006	Southwest Arkansas Planning and Development District, Inc.	Magnolia	Planning	\$ 210,000	\$ 171,930
Arkansas	ED23AUS3020007	Central Arkansas Planning and Development District	Lonoke	Planning	\$ 210,000	\$ 210,000
Arkansas	ED23AUS3020008	Northwest Arkansas Economic Development District, Inc.	Harrison	Planning	\$ 210,000	\$ 90,000
Arkansas	ED23AUS3020020	East Arkansas Planning and Development District	Jonesboro	Planning	\$ 210,000	\$ 90,000
Arkansas	ED230IE0G0048	University of Arkansas	Fayetteville	Economic Adjustment Assistance	\$ 493,521	\$ 562,575
Arkansas	ED230IE0G0154	University of Arkansas	Fayetteville	Build 2 Scale	\$ 1,172,715	\$ 1,272,060
California	70107939	Alchemist Community Development Corporation	Sacramento	Public Works	\$ 3,879,429	\$ 969,858
California	70107950	Yurok Economic Development Corporation	Klamath	Public Works	\$ 6,022,800	\$ 300,000
California	70107953	Tule River Economic Development Corporation	Porterville	Public Works	\$ 3,195,378	\$ 1,646,103
California	76907938	Lake County Economic Development Corporation	Lakeport	Economic Adjustment Assistance	\$ 80,000	\$ 20,000
California	77907942	County of Fresno	Fresno	Economic Adjustment Assistance	\$ 150,000	\$ 150,000
California	7790758401	City of Chico	Chico	Economic Adjustment Assistance	\$ 525,000	\$ -
California	7790775701	City of Vallejo	Vallejo	Economic Adjustment Assistance	\$ 555,927	\$ -
California	ED22SEA3020020	Superior California Economic Development, Inc.	Redding	Planning	\$ 18,750	\$ -
California	ED22SEA3030038	University of Southern California	Los Angeles	Technical Assistance	\$ 125,000	\$ 125,000
California	ED22SEA3030039	Chico State Enterprises	Chico	Technical Assistance	\$ 195,000	\$ 195,000
California	ED22SEA3030042	California State University, Bakersfield Auxiliary for Sponsored Programs Administration	Bakersfield	Technical Assistance	\$ 141,800	\$ 141,800

* All supplemental Awards are funded under the Economic Adjustment Assistance (EAA) Program

** Match includes Local(Applicant) match, State, and other federal funding, where applicable

States/Territories	Project Number	Applicant	City	EDA Program	EDA Funding	Match**
California	ED23HDQ3130009	University Of Southern California	Los Angeles	Trade Adjustment Assistance for Firms	\$ 1,583,887	\$ 210,000
California	ED230IEOG0043	CodePath.org	San Francisco	Economic Adjustment Assistance	\$ 500,000	\$ 500,000
California	ED230IEOG0073	San Diego Electrical Training Trust	San Diego	Economic Adjustment Assistance	\$ 496,693	\$ 503,695
California	ED230IEOG0103	San Jose State University Research Foundation	San Jose	Build 2 Scale	\$ 300,000	\$ 300,000
California	ED230IEOG0110	University Lab Partners	Irvine	Build 2 Scale	\$ 1,999,844	\$ 1,999,844
California	ED230IEOG0143	University of California, San Diego	La Jolla	Build 2 Scale	\$ 750,000	\$ 750,000
California	ED23SEAOG0010	San Bernardino Community College District Economic Development and Corporate Training	San Bernardino	Public Works	\$ 3,000,000	\$ 1,066,216
California	ED23SEA3020014	Sierra Business Council	Truckee	Planning	\$ 225,000	\$ 225,000
California	ED23SEA3020015	Dry Creek Rancheria	Santa Rosa	Planning	\$ 135,000	\$ -
California	ED23SEA3030003	County of Humboldt	Eureka	Technical Assistance	\$ 70,000	\$ 73,000
California	ED23SEA3030021	Metropolitan Transportation Commission	San Francisco	Technical Assistance	\$ 70,000	\$ 70,000
Colorado	ED23DENOG0005	Community Office for Resource Efficiency	Basalt	Technical Assistance	\$ 30,000	\$ 30,000
Colorado	ED23DENOG0020	Ute Mountain Ute Tribe of the Ute Mountain Reservation	Towaoc	Planning	\$ 153,000	\$ -
Colorado	ED23DENOG0062	Colorado State University	Fort Collins	Technical Assistance	\$ 150,000	\$ 150,000
Colorado	ED23DENOG0067	Metropolitan State University of Denver	Denver	Technical Assistance	\$ 99,720	\$ 99,720
Colorado	ED23DENOG0078	City of Delta	Delta	Economic Adjustment Assistance	\$ 433,240	\$ 433,240
Colorado	ED23DEN3020017	Northwest Colorado Council of Governments	Silverthorne	Planning	\$ 210,000	\$ 210,000
Colorado	ED23DEN3020018	San Luis Valley Development Resources Group	Alamosa	Planning	\$ 210,000	\$ 90,000
Colorado	ED23DEN3020019	Southern Colorado Economic Development District, Inc.	Pueblo	Planning	\$ 210,000	\$ 52,500
Colorado	ED23HDQ3130003	The Regents Of The University Of Colorado	Boulder	Trade Adjustment Assistance for Firms	\$ 1,402,009	\$ 411,818
Colorado	ED230IEOG0120	Denver Office of Economic Development and Opportunity	DENVER	Build 2 Scale	\$ 750,000	\$ 750,000
Colorado	ED230IEOG0126	Rocky Mountain Innovation Initiative, Inc.	Fort Collins	Build 2 Scale	\$ 1,982,577	\$ 2,849,027
Connecticut	ED21PHI3020007	Western Connecticut Council of Governments	Sandy Hook	Planning	\$ 70,000	\$ 70,000
Connecticut	ED21PHI3030018	University of Connecticut	Storrs	Technical Assistance	\$ 137,923	\$ 138,216
Connecticut	ED22PHI3020060	Northwest Hills Council of Governments	Goshen	Planning	\$ 60,000	\$ 60,000
Connecticut	ED230IEOG0136	The Community Foundation for Greater New Haven	New Haven	Build 2 Scale	\$ 1,999,415	\$ 2,058,520
Connecticut	ED23PHIOG0025	Southeastern Connecticut Enterprise Region Corp.	Groton	Planning	\$ 210,000	\$ 210,000
Delaware	ED21PHI3030017	University of Delaware	Newark	Technical Assistance	\$ 137,923	\$ 137,923
Delaware	ED230IEOG0125	Delaware Innovation Space, Inc.	Wilmington	Build 2 Scale	\$ 750,000	\$ 750,000
District of Columbia	171466 14517078	DOC Census Bureau	Washington	Technical Assistance	\$ 74,494	\$ -
District of Columbia	171467 14517048	DOC Census Bureau	Washington	Technical Assistance	\$ 93,035	\$ -
District of Columbia	ED18HDQ3120012	The Urban Institute	Washington	Research and National Technical Assistance	\$ 199,983	\$ -
District of Columbia	ED22HDQ3070185	The Urban Institute	Washington	Research and National Technical Assistance	\$ 399,761	\$ -
District of Columbia	ED23AUSOG0013	National Association of Development Organizations (NADO) Research Foundation	Washington	Technical Assistance	\$ 495,630	\$ 123,907

* All supplemental Awards are funded under the Economic Adjustment Assistance (EAA) Program

** Match includes Local(Applicant) match, State, and other federal funding, where applicable

States/Territories	Project Number	Applicant	City	EDA Program	EDA Funding	Match**
District of Columbia	ED230IEOG0178	Georgetown University	Washington	Build 2 Scale	\$ 750,000	\$ 750,000
District of Columbia	ED23PHIOG0032	Latino Economic Development Corporation of Washington, DC	Washington DC	Technical Assistance	\$ 100,000	\$ 100,000
Florida	40107824	Sebring Airport Authority	Sebring	Public Works	\$ 1,830,207	\$ 457,552
Florida	46907849	City of Eustis	Eustis	Economic Adjustment Assistance	\$ 19,250	\$ 19,250
Florida	47907834	Central Florida Regional Planning Council	Bartow	Economic Adjustment Assistance	\$ 200,000	\$ 50,000
Florida	47907835	Tampa Bay Regional Planning Council	Pinellas Park	Economic Adjustment Assistance	\$ 224,000	\$ 56,000
Florida	47907836	East Central Florida Regional Planning Council	Orlando	Economic Adjustment Assistance	\$ 206,738	\$ 51,685
Florida	47907841	Southwest Florida Regional Planning Council	Cape Coral	Economic Adjustment Assistance	\$ 257,469	\$ 64,367
Florida	47907850	Northeast Florida Regional Council	Jacksonville	Economic Adjustment Assistance	\$ 190,176	\$ 47,544
Florida	ED22ATL3030038	Florida A&M University	Tallahassee	Technical Assistance	\$ 109,618	\$ 109,618
Florida	ED22ATL3030046	University of West Florida	Pensacola	Technical Assistance	\$ 109,618	\$ 109,618
Florida	ED23ATL3020004	Northeast Florida Regional Council	Jacksonville	Planning	\$ 210,000	\$ 140,000
Florida	ED23ATL3020007	Southwest Florida Regional Planning Council	Cape Coral	Planning	\$ 210,000	\$ 90,000
Florida	ED23ATL3020013	East Central Florida Regional Planning Council	Orlando	Planning	\$ 210,000	\$ 210,000
Florida	ED23ATL3020014	Treasure Coast Regional Planning Council	Stuart	Planning	\$ 210,000	\$ 210,000
Florida	ED23ATL3020024	Apalachee Regional Planning Council	Tallahassee	Planning	\$ 210,000	\$ 90,000
Florida	ED23ATL3020026	Tampa Bay Regional Planning Council	Pinellas Park	Planning	\$ 210,000	\$ 210,000
Florida	ED23ATL3020027	North Central Florida Regional Planning Council	Gainesville	Planning	\$ 210,000	\$ 52,500
Florida	ED230IEOG0052	Board of Trustees, St. Petersburg College	St. Petersburg	Economic Adjustment Assistance	\$ 323,832	\$ 325,518
Florida	ED230IEOG0145	Tampa Bay Wave, Inc.	Tampa	Build 2 Scale	\$ 396,000	\$ 397,000
Georgia	40107858	Emanuel County Development Authority	Swainsboro	Public Works	\$ 1,150,980	\$ 767,320
Georgia	40107859	Brewton-Parker College	Mount Vernon	Public Works	\$ 1,515,000	\$ 1,010,000
Georgia	47907838	Georgia Southern University Research and Service Foundation, Inc.	Statesboro	Economic Adjustment Assistance	\$ 794,472	\$ 198,618
Georgia	47907857	Wiregrass Georgia Technical College	Fitzgerald	Economic Adjustment Assistance	\$ 742,180	\$ 318,078
Georgia	47907880	Effingham County Industrial Development Authority	Rincon	Economic Adjustment Assistance	\$ 2,500,000	\$ 4,359,125
Georgia	4790769501	City of Hogansville	Hogansville	Economic Adjustment Assistance	\$ 1,039,270	\$ 200,000
Georgia	ED22ATL3030034	Georgia Tech Research Corporation	Atlanta	Technical Assistance	\$ 109,618	\$ 109,618
Georgia	ED22ATL3030044	Georgia Southern University Research and Service Foundation, Inc.	Statesboro	Technical Assistance	\$ 109,618	\$ 109,618
Georgia	ED23ATLOG0080	Georgia Tech Research Corporation	Atlanta	Technical Assistance	\$ 79,448	\$ 19,862
Georgia	ED23ATL3020002	Central Savannah River Area Regional Commission	Augusta	Planning	\$ 210,000	\$ 52,500
Georgia	ED23ATL3020006	Georgia Mountains Regional Development Commission	Gainesville	Planning	\$ 210,000	\$ 140,000
Georgia	ED23ATL3020008	Middle Georgia Regional Commission	Macon	Planning	\$ 225,000	\$ 96,429
Georgia	ED23ATL3020010	Atlanta Regional Commission	Atlanta	Planning	\$ 210,000	\$ 140,000
Georgia	ED23ATL3020017	Northeast Georgia Regional Commission, Inc.	Athens	Planning	\$ 210,000	\$ 210,000
Georgia	ED23ATL3020018	Heart of Georgia Altamaha Regional Commission	Eastman	Planning	\$ 210,000	\$ 52,500

* All supplemental Awards are funded under the Economic Adjustment Assistance (EAA) Program

** Match includes Local(Applicant) match, State, and other federal funding, where applicable

States/Territories	Project Number	Applicant	City	EDA Program	EDA Funding	Match**
Georgia	ED23ATL3020022	Three Rivers Regional Commission	Griffin	Planning	\$ 210,000	\$ 140,000
Georgia	ED23ATL3020023	Northwest Georgia Regional Commission	Rome	Planning	\$ 210,000	\$ 90,000
Georgia	ED23HDQ3130011	Georgia Tech Research Corporation	Atlanta	Trade Adjustment Assistance for Firms	\$ 1,239,320	\$ 191,635
Georgia	ED230IEOG0157	Spelman College	Atlanta	Build 2 Scale	\$ 749,896	\$ 779,882
Guam	77907943	Guam Department of Administration	Asan	Economic Adjustment Assistance	\$ 300,800	\$ -
Guam	7790755701	University of Guam	Mangilao	Economic Adjustment Assistance	\$ 4,289,738	\$ 7,207,521
Hawaii	7790771201	Natural Energy Laboratory of Hawaii Authority	Kailua Kona	Economic Adjustment Assistance	\$ 656,000	\$ 164,000
Hawaii	ED22SEA3030041	University of Hawaii Systems	Honolulu	Technical Assistance	\$ 150,000	\$ 150,000
Hawaii	ED230IEOG0134	Pacific American Foundation	Kailua	Build 2 Scale	\$ 300,000	\$ 379,535
Idaho	7790764801	Valley County	Cascade	Economic Adjustment Assistance	\$ 850,000	\$ 250,000
Idaho	ED22SEA3030037	Boise State University	Boise	Technical Assistance	\$ 125,000	\$ 125,000
Illinois	66906460	Blackhawk Hills Resource Conservation & Development (RC&D) Council	Rock Falls	Economic Adjustment Assistance	\$ 125,000	\$ 125,000
Illinois	66906463	Greater Waukegan Development Coalition	Waukegan	Economic Adjustment Assistance	\$ 123,460	\$ 52,912
Illinois	ED21CHI3030024	University of Illinois	Chicago	Technical Assistance	\$ 106,000	\$ 106,000
Illinois	ED21CHI3030033	University of Illinois	Urbana	Technical Assistance	\$ 106,000	\$ 106,000
Illinois	ED22HDQ3120191	UChicago Argonne, LLC	Chicago	Research and National Technical Assistance	\$ 798,937	\$ -
Illinois	ED23CHIOG0006	Bi-State Regional Commission	Rock Island	Planning	\$ 210,000	\$ 210,000
Illinois	ED23CHIOG0057	mHUB	Chicago	Economic Adjustment Assistance	\$ 778,105	\$ 778,105
Illinois	ED23CHIOG0090	Kaskaskia Regional Port District	Red Bud	Public Works	\$ 1,688,625	\$ 1,205,925
Illinois	ED23CHIOG0170	EDC, Inc. The Economic Development Council for the Peoria Area	Peoria	Planning	\$ 20,000	\$ 20,000
Illinois	ED23CHI3020005	Western Illinois Regional Council	Macomb	Planning	\$ 70,000	\$ 70,000
Illinois	ED23CHI3020020	South Central Illinois Regional Planning & Development Commission	Salem	Planning	\$ 210,000	\$ 210,000
Illinois	ED23HDQ3130002	Applied Strategies International Ltd	Chicago	Trade Adjustment Assistance for Firms	\$ 1,168,871	\$ 408,481
Illinois	ED230IEOG0142	Evergreen Climate Innovations	Chicago	Build 2 Scale	\$ 750,000	\$ 750,000
Indiana	60106464	City of Jasper	Jasper	Public Works	\$ 1,186,000	\$ 1,186,000
Indiana	60106470	Town of Oxford	Oxford	Public Works	\$ 1,700,425	\$ 1,700,425
Indiana	67906465	Ivy Tech Community College	Indianapolis	Economic Adjustment Assistance	\$ 500,000	\$ 500,000
Indiana	67906474	County of Cass	Logansport	Economic Adjustment Assistance	\$ 1,751,658	\$ 1,422,130
Indiana	ED21CHI3030034	Purdue University	West Lafayette	Technical Assistance	\$ 134,708	\$ 134,911
Indiana	ED21CHI3030035	Trustees of Indiana University	Bloomington	Technical Assistance	\$ 96,000	\$ 96,000
Indiana	ED23CHIOG0002	Northwestern Indiana Regional Planning Commission	Portage	Planning	\$ 70,000	\$ 70,000
Indiana	ED23CHIOG0003	Southern Indiana Development Commission	Loogootee	Planning	\$ 210,000	\$ 224,545
Indiana	ED23CHIOG0081	Rose-Hulman Institute of Technology, Inc.	Terre Haute	Public Works	\$ 2,203,650	\$ 6,610,950
Indiana	ED23CHIOG0082	Woods Hole Oceanographic Institution	Evansville	Planning	\$ 60,000	\$ 60,000
Indiana	ED23CHI3020004	Kankakee-Iroquois Regional Planning Commission	Monon	Planning	\$ 210,000	\$ 210,000

* All supplemental Awards are funded under the Economic Adjustment Assistance (EAA) Program

** Match includes Local(Applicant) match, State, and other federal funding, where applicable

States/Territories	Project Number	Applicant	City	EDA Program	EDA Funding	Match**
Indiana	ED23CHI3020011	Michiana Area Council of Governments	South Bend	Planning	\$ 227,500	\$ 227,500
Indiana	ED23CHI3020014	Region III-A Development and Regional Planning Commission	Kendallville	Planning	\$ 210,000	\$ 210,000
Indiana	ED23CHI3030013	East Central Indiana (ECI) Regional Planning District, Inc.	Muncie	Technical Assistance	\$ 60,000	\$ 60,000
Indiana	ED230IEOG0124	Northwest Central Indiana Community Partnerships, Inc.	West Lafayette	Build 2 Scale	\$ 1,047,866	\$ 1,047,867
Indiana	ED230IEOG0140	Central Indiana Corporate Partnership	Indianapolis	Build 2 Scale	\$ 400,000	\$ 566,163
Indiana	ED23RNAOG0174	Purdue University	West Lafayette	Trade Adjustment Assistance for Firms	\$ 525,902	\$ -
Iowa	57906267	Indian Hills Community College	Ottumwa	Economic Adjustment Assistance	\$ 725,000	\$ 725,000
Iowa	57906269	Iowa Central Community College	Fort Dodge	Economic Adjustment Assistance	\$ 700,000	\$ 700,000
Iowa	57906277	City of Dubuque	Dubuque	Economic Adjustment Assistance	\$ 5,200,000	\$ 19,012,000
Iowa	5790594701	M&P Missouri River Levee District	Glenwood	Economic Adjustment Assistance	\$ 248,476	\$ 62,119
Iowa	ED23DENOG0058	Iowa State University of Science and Technology	Ames	Technical Assistance	\$ 150,000	\$ 150,000
Iowa	ED23DEN3020005	Area 15 Regional Planning Commission	Ottumwa	Planning	\$ 210,000	\$ 210,000
Iowa	ED23DEN3020006	East Central Intergovernmental Association	Dubuque	Planning	\$ 210,000	\$ 210,000
Iowa	ED23DEN3020007	Iowa Northland Regional Council of Governments	Waterloo	Planning	\$ 210,000	\$ 210,000
Iowa	ED23DEN3020008	Region 6 Planning Commission	Marshalltown	Planning	\$ 210,000	\$ 210,000
Iowa	ED23DEN3020015	East Central Iowa Council of Governments	Cedar Rapids	Planning	\$ 210,000	\$ 210,000
Iowa	ED23DEN3020020	North Iowa Area Council of Governments	Mason City	Planning	\$ 210,000	\$ 210,000
Kansas	ED23DENOG0064	Kansas State University	Manhattan	Technical Assistance	\$ 200,000	\$ 200,000
Kansas	ED23DENOG0171	Pittsburg State University	Pittsburg	Technical Assistance	\$ 99,772	\$ 99,772
Kentucky	40107839	City of Carrollton	Carrollton	Public Works	\$ 1,962,133	\$ 6,568,882
Kentucky	40107840	City of Danville	Danville	Public Works	\$ 1,996,505	\$ 3,707,795
Kentucky	46907883	City of Madisonville	Madisonville	Economic Adjustment Assistance	\$ 96,000	\$ 24,000
Kentucky	47907872	Foundation for Appalachian Kentucky	Hazard	Economic Adjustment Assistance	\$ 494,700	\$ 190,000
Kentucky	47907878	Appalachian Regional Healthcare, Inc.	Lexington	Economic Adjustment Assistance	\$ 2,156,800	\$ 539,200
Kentucky	47907881	Pine Ridge Regional Industrial Authority, Inc.	Hazard	Economic Adjustment Assistance	\$ 1,999,388	\$ 500,000
Kentucky	47907882	Mountain Association for Community Economic Development (MACED)	Berea	Economic Adjustment Assistance	\$ 1,200,000	\$ 300,000
Kentucky	47907904	Muhlenberg County Fiscal Court	Greenville	Economic Adjustment Assistance	\$ 2,153,010	\$ 569,240
Kentucky	4790747701	City of Springfield	Springfield	Economic Adjustment Assistance	\$ 1,440,600	\$ 360,150
Kentucky	ED22ATL3030043	University of Louisville	Louisville	Technical Assistance	\$ 109,618	\$ 109,618
Kentucky	ED22ATL3030048	The University of Kentucky Research Foundation	Lexington	Technical Assistance	\$ 109,618	\$ 109,618
Kentucky	ED22ATL3030049	Northern Kentucky University	Newport	Technical Assistance	\$ 109,618	\$ 109,618
Kentucky	ED23ATLOG0083	Kentucky Association of Mitigation Managers, Inc.	Frankfort	Technical Assistance	\$ 30,170	\$ 10,330
Kentucky	ED23ATLOG0097	Commonwealth of Kentucky – Department for Local Government	Frankfort	Planning	\$ 1,442,700	\$ 360,675
Kentucky	ED230IEOG0155	The University of Kentucky Research Foundation	Lexington	Build 2 Scale	\$ 749,795	\$ 749,795
Louisiana	80105711	Tunica-Biloxi Tribe of Louisiana	Marksville	Public Works	\$ 1,600,000	\$ 250,000

* All supplemental Awards are funded under the Economic Adjustment Assistance (EAA) Program

** Match includes Local(Applicant) match, State, and other federal funding, where applicable

States/Territories	Project Number	Applicant	City	EDA Program	EDA Funding	Match**
Louisiana	80205709	Lake Providence Port Commission	Lake Providence	Public Works	\$ 380,000	\$ 95,172
Louisiana	8790529101	Plaquemines Parish Government	Belle Chasse	Economic Adjustment Assistance	\$ 1,800,000	\$ 1,098,550
Louisiana	ED23AUSOG0046	University of Louisiana Lafayette	Lafayette	Technical Assistance	\$ 130,000	\$ 130,000
Louisiana	ED23AUSOG0069	Southern University and A&M College System	Baton Rouge	Technical Assistance	\$ 130,000	\$ 147,539
Louisiana	ED23AUSOG0089	Lake Providence Port Commission	Lake Providence	Planning	\$ 250,000	\$ 62,500
Louisiana	ED230IEOG0109	The Idea Village	New Orleans	Build 2 Scale	\$ 2,000,000	\$ 2,000,000
Louisiana	ED230IEOG0151	Biomedical Research Foundation of Northwest Louisiana	Shreveport	Build 2 Scale	\$ 1,338,168	\$ 1,338,183
Louisiana	ED230IEOG0160	Biomedical Research Foundation of Northwest Louisiana	Shreveport	Build 2 Scale	\$ 655,436	\$ 658,250
Louisiana	ED230IEOG0175	Louisiana State University	Baton Rouge	Build 2 Scale	\$ 600,000	\$ 600,000
Maine	10115377	Town of Madawaska	Madawaska	Public Works	\$ 2,012,000	\$ 503,000
Maine	ED21PHI3030014	University of Maine System	Portland	Technical Assistance	\$ 137,923	\$ 137,923
Maine	ED22PHI3020045	Eastern Maine Development Corporation	Bangor	Planning	\$ 70,000	\$ 70,000
Maine	ED22PHI3020046	Kennebec Valley Council of Governments	Fairfield	Planning	\$ 70,000	\$ 70,000
Maine	ED22PHI3020047	Androscoggin Valley Council of Governments	Auburn	Planning	\$ 70,000	\$ 70,000
Maine	ED22PHI3020048	Northern Maine Development Commission, Inc.	Caribou	Planning	\$ 70,000	\$ 70,000
Maine	ED22PHI3020062	Midcoast Economic Development District	Damariscotta	Planning	\$ 70,000	\$ 70,000
Maine	ED230IEOG0127	Gulf of Maine Research Institute	Portland	Build 2 Scale	\$ 669,433	\$ 669,632
Maine	ED23PHI0G0030	Southern Maine Planning and Development Commission	Saco	Planning	\$ 210,000	\$ 210,000
Maryland	ED21PHI3030012	University of Maryland, College Park	College Park	Technical Assistance	\$ 137,923	\$ 171,536
Maryland	ED22PHI3020026	Tri-County Council for Western Maryland, Inc.	Cumberland	Planning	\$ 70,000	\$ 70,000
Maryland	ED23HDQ0240001	Fearless Solutions, LLC	Baltimore	Build 2 Scale	\$ 661,725	\$ 661,725
Maryland	ED230IEOG0131	Mid-Atlantic Gigabit Innovation	Westminster	Build 2 Scale	\$ 274,498	\$ 283,033
Maryland	ED23PHI0G0033	Mid-Shore Regional Council	Easton	Planning	\$ 210,000	\$ 210,000
Massachusetts	16915364	Old Colony Planning Council	Brockton	Economic Adjustment Assistance	\$ 470,000	\$ 470,000
Massachusetts	16915367	Montachusett Regional Planning Commission	Leominster	Economic Adjustment Assistance	\$ 134,073	\$ 134,073
Massachusetts	17915361	Mashpee Wampanoag Tribe	Mashpee (Town of)	Economic Adjustment Assistance	\$ 463,357	\$ -
Massachusetts	169015116	Woods Hole Oceanographic Institution	Woods Hole	Economic Adjustment Assistance	\$ 106,550	\$ 118,000
Massachusetts	ED21PHI3030021	Northeastern University	Boston	Technical Assistance	\$ 137,923	\$ 101,923
Massachusetts	ED22PHI3020023	Southeastern Regional Planning & Economic Development District	Taunton	Planning	\$ 70,000	\$ 70,000
Massachusetts	ED22PHI3020032	Old Colony Planning Council	Brockton	Planning	\$ 70,000	\$ 70,000
Massachusetts	ED22PHI3020042	Montachusett Regional Planning Commission	Leominster	Planning	\$ 70,000	\$ 70,000
Massachusetts	ED22PHI3020058	Metropolitan Area Planning Council	Boston	Planning	\$ 70,000	\$ 35,000
Massachusetts	ED23HDQ3130007	New England Trade Adjustment Assistance Center, Inc.	North Billerica	Trade Adjustment Assistance for Firms	\$ 1,209,066	\$ 478,307
Massachusetts	ED230IEOG0053	Middlesex Community College	Lowell	Economic Adjustment Assistance	\$ 409,410	\$ 513,387
Massachusetts	ED230IEOG0128	Mansfield BioIncubator	Mansfield	Build 2 Scale	\$ 1,250,000	\$ 1,250,000

* All supplemental Awards are funded under the Economic Adjustment Assistance (EAA) Program

** Match includes Local(Applicant) match, State, and other federal funding, where applicable

States/Territories	Project Number	Applicant	City	EDA Program	EDA Funding	Match**
Massachusetts	ED230IEOG0152	Greentown Collaborative Inc.	Somerville	Build 2 Scale	\$ 400,000	\$ 400,000
Massachusetts	ED230IEOG0180	Northeastern University	Boston	Build 2 Scale	\$ 1,999,943	\$ 2,409,955
Massachusetts	ED23PHIOG0029	Town of East Bridgewater	East Bridgewater	Public Works	\$ 3,000,000	\$ 6,099,000
Massachusetts	ED23PHIOG0088	Berkshire Regional Planning Commission	Pittsfield	Planning	\$ 210,000	\$ 210,000
Massachusetts	ED23PHIOG0137	Merrimack Valley Planning Commission	Haverhill	Planning	\$ 60,000	\$ 24,000
Massachusetts	ED23PHI020001	Pioneer Valley Planning Commission	Springfield	Planning	\$ 210,000	\$ 140,002
Massachusetts	ED23RNAOG0173	Civic Roundtable, Inc.	Boston	Technical Assistance	\$ 250,461	\$ -
Michigan	60106467	Charter Township of Mundy	Swartz Creek	Public Works	\$ 2,000,000	\$ 2,502,393
Michigan	66906466	City of Hamtramck	Hamtramck	Economic Adjustment Assistance	\$ 308,726	\$ 77,834
Michigan	66906471	County of Lake	Baldwin	Economic Adjustment Assistance	\$ 433,600	\$ 108,400
Michigan	6010624501	Chippewa County Economic Development Corporation	Kincheloe	Public Works	\$ 2,500,000	\$ 1,250,000
Michigan	6010631701	City of Detroit	Detroit	Public Works	\$ 2,500,000	\$ 13,724,703
Michigan	ED21CHI3030025	Regents of the University of Michigan	Flint	Technical Assistance	\$ 116,000	\$ 132,704
Michigan	ED21CHI3030027	Michigan State University	East Lansing	Technical Assistance	\$ 186,000	\$ 228,599
Michigan	ED23CHIOG0026	Northern Lakes Economic Alliance	Boyne City	Economic Adjustment Assistance	\$ 400,000	\$ 100,000
Michigan	ED23CHIOG0098	Central Upper Peninsula Planning and Development Regional Commission	Escanaba	Economic Adjustment Assistance	\$ 320,000	\$ 80,000
Michigan	ED23CHIOG0169	Port Sheldon Township	West Olive	Planning	\$ 67,500	\$ 67,500
Michigan	ED23CHI3020001	Muskegon Area First	Muskegon	Planning	\$ 66,630	\$ 75,000
Michigan	ED23CHI3020002	West Michigan Shoreline Regional Development Commission	Muskegon	Planning	\$ 210,000	\$ 90,000
Michigan	ED23CHI3020003	Region II Planning Commission	Jackson	Planning	\$ 70,000	\$ 70,000
Michigan	ED23CHI3020012	Inter-Tribal Council of Michigan, Inc.	Sault Sainte Marie	Planning	\$ 153,000	\$ -
Michigan	ED23CHI3020018	Northeast Michigan Council of Governments	Gaylord	Planning	\$ 210,000	\$ 140,000
Michigan	ED23CHI3020021	Central Upper Peninsula Planning & Development Regional Commission	Escanaba	Planning	\$ 210,000	\$ 90,000
Michigan	ED23HDQ3130005	Regents Of The University Of Michigan	Ann Arbor	Trade Adjustment Assistance for Firms	\$ 1,193,670	\$ 301,012
Michigan	ED230IEOG0114	Michigan Tech Enterprise Corporation	Houghton	Build 2 Scale	\$ 750,000	\$ 750,669
Michigan	ED230IEOG0135	Traverse City Center of Entrepreneurship	Traverse City	Build 2 Scale	\$ 2,000,000	\$ 2,000,000
Michigan	ED230IEOG0138	Michigan Technological University	Houghton	Build 2 Scale	\$ 400,000	\$ 400,000
Minnesota	6010614901	Grand Portage Reservation Tribal Council	Grand Portage	Economic Adjustment Assistance	\$ 1,897,337	\$ -
Minnesota	ED21CHI3030026	Regents of the University of Minnesota	Minneapolis	Technical Assistance	\$ 174,300	\$ 174,300
Minnesota	ED23CHIOG0094	City of Oak Park Heights	Oak Park Heights	Economic Adjustment Assistance	\$ 1,485,000	\$ 1,485,000
Minnesota	ED23CHI3020015	East Central Regional Development Commission	Mora	Planning	\$ 210,000	\$ 210,000
Minnesota	ED23CHI3020016	Mid Minnesota Development Commission	Willmar	Planning	\$ 210,000	\$ 210,000
Minnesota	ED23CHI3030022	Region 9 Development Commission	Mankato	Technical Assistance	\$ 64,112	\$ 64,130
Minnesota	ED23RNAOG0147	Institute for Local Self Reliance	Minneapolis	Technical Assistance	\$ 824,956	\$ -
Mississippi	40107853	East Mississippi Community College	Scooba	Public Works	\$ 3,000,000	\$ 3,944,586

* All supplemental Awards are funded under the Economic Adjustment Assistance (EAA) Program

** Match includes Local(Applicant) match, State, and other federal funding, where applicable

States/Territories	Project Number	Applicant	City	EDA Program	EDA Funding	Match**
Mississippi	47907860	Three Rivers Planning and Development District	Pontotoc	Economic Adjustment Assistance	\$ 200,000	\$ -
Mississippi	47907861	South Delta Planning and Development District, Inc.	Greenville	Economic Adjustment Assistance	\$ 250,000	\$ -
Mississippi	47907862	North Central Planning and Development District, Inc.	Winona	Economic Adjustment Assistance	\$ 50,000	\$ -
Mississippi	ED22ATL3030037	Mississippi State University	Mississippi State	Technical Assistance	\$ 109,618	\$ 109,618
Mississippi	ED23ATL3020019	North Delta Planning and Development District, Inc.	Batesville	Planning	\$ 210,000	\$ 52,500
Mississippi	ED23ATL3020021	South Delta Planning and Development District, Inc.	Greenville	Planning	\$ 210,000	\$ 52,500
Missouri	50106274	City of Washington	Washington	Public Works	\$ 1,301,265	\$ 1,301,265
Missouri	57906265	Meramec Regional Planning Commission	St. James	Economic Adjustment Assistance	\$ 80,000	\$ 20,000
Missouri	5790596801	Pike County	Bowling Green	Economic Adjustment Assistance	\$ 296,714	\$ 74,179
Missouri	ED23DEN0G0001	Ozarks Technical Community College	Springfield	Public Works	\$ 1,712,580	\$ 3,140,357
Missouri	ED23DEN0G0004	Missouri Association of Councils of Government (MACOG)	Jefferson City	Technical Assistance	\$ 46,900	\$ 20,100
Missouri	ED23DEN0G0051	The Curators of the University of Missouri on behalf of the University of Missouri – Kansas City	Kansas City	Technical Assistance	\$ 200,000	\$ 200,000
Missouri	ED23DEN0G0068	Missouri State University	Springfield	Technical Assistance	\$ 150,000	\$ 150,000
Missouri	ED23DEN0G0081	City of Moberly	Moberly	Public Works	\$ 1,500,000	\$ 1,641,120
Missouri	ED23DEN0G0083	Southeast Missouri Regional Planning Commission	Perryville	Planning	\$ 63,000	\$ 63,000
Missouri	ED23DEN0G0092	Mississippi County	Charleston	Planning	\$ 63,000	\$ 27,000
Missouri	ED23DEN3020009	Kaysinger Basin Regional Planning Commission	Clinton	Planning	\$ 210,000	\$ 90,000
Missouri	ED23DEN3020013	Mark Twain Regional Council of Governments	Perry	Planning	\$ 210,000	\$ 140,001
Missouri	ED23DEN3020016	Ozark Foothills Regional Planning Commission	Poplar Bluff	Planning	\$ 210,000	\$ 90,000
Missouri	ED23DEN3020021	Green Hills Regional Planning Commission	Trenton	Planning	\$ 210,000	\$ 90,000
Missouri	ED23DEN3020023	Northwest Missouri Regional Council of Governments	Maryville	Planning	\$ 210,000	\$ 140,000
Missouri	ED23DEN3020026	Harry S. Truman Coordinating Council	Neosho	Planning	\$ 210,000	\$ 90,000
Missouri	ED23HDQ3130004	University Of Missouri System	Columbia	Trade Adjustment Assistance for Firms	\$ 1,189,816	\$ 127,398
Missouri	ED230IEOG0065	Goodwill of Western Missouri and Eastern Kansas	Kansas City	Economic Adjustment Assistance	\$ 499,196	\$ 500,802
Missouri	ED230IEOG0100	Codefi Foundation on Rural Innovation (formerly Marquette Tech District Foundation, Inc.)	Cape Girardeau	Build 2 Scale	\$ 321,000	\$ 321,000
Missouri	ED230IEOG0113	Entrepreneur Startup Business Development Corporation dba Arch Grants	Saint Louis	Build 2 Scale	\$ 750,000	\$ 750,000
Missouri	ED230IEOG0117	The Curators of the University of Missouri on behalf of the University of Missouri – Kansas City	Kansas City	Build 2 Scale	\$ 1,999,706	\$ 1,999,824
Montana	ED23DEN0G0015	Blackfeet Tribe of the Blackfeet Indian Reservation	Browning	Planning	\$ 153,000	\$ -
Montana	ED23DEN0G0017	Confederated Salish and Kootenai Tribes	Pablo	Planning	\$ 153,000	\$ -
Montana	ED23DEN0G0018	Fort Peck Assiniboine and Sioux Tribes	Poplar	Planning	\$ 153,000	\$ -
Montana	ED23DEN0G0060	University of Montana	Missoula	Technical Assistance	\$ 148,800	\$ 148,800
Montana	ED23DEN0G0172	Great Falls Development Authority, Inc.	Great Falls	Technical Assistance	\$ 120,000	\$ 120,000
Montana	ED23DEN3020010	Great Northern Development Corporation	Wolf Point	Planning	\$ 210,000	\$ 90,000

* All supplemental Awards are funded under the Economic Adjustment Assistance (EAA) Program

** Match includes Local(Applicant) match, State, and other federal funding, where applicable

States/Territories	Project Number	Applicant	City	EDA Program	EDA Funding	Match**
Montana	ED23DEN3020014	Snowy Mountain Development Corporation	Lewistown	Planning	\$ 210,000	\$ 52,500
Montana	ED23DEN3020024	Montana Business Assistance Connection, Inc.	Helena	Planning	\$ 210,000	\$ 210,000
Montana	ED23DEN3020027	Northern Rocky Mountain Economic Development District	Bozeman	Planning	\$ 210,000	\$ 210,000
Montana	ED23DEN3020028	Headwaters Resource Conservation & Development Area, Inc.	Butte	Planning	\$ 210,000	\$ 210,000
Nebraska	5790604001	City of Tecumseh	Tecumseh	Economic Adjustment Assistance	\$ 769,266	\$ 192,316
Nebraska	ED23DEN3020004	South Central Economic Development District, Inc.	Holdrege	Planning	\$ 210,000	\$ 210,000
Nebraska	ED230IEOG0121	Board of Regents of the University of Nebraska	Omaha	Build 2 Scale	\$ 637,710	\$ 638,544
Nevada	77907952	City of Las Vegas	Las Vegas	Economic Adjustment Assistance	\$ 1,311,480	\$ 327,870
Nevada	ED22SEA3030047	Nevada System of Higher Education	Reno	Technical Assistance	\$ 165,000	\$ 165,000
Nevada	ED230IEOG0084	University of Nevada Las Vegas	Las Vegas	Build 2 Scale	\$ 749,037	\$ 750,121
Nevada	ED230IEOG0149	University of Nevada Las Vegas	Las Vegas	Build 2 Scale	\$ 400,000	\$ 400,000
Nevada	ED23SEA0G0087	Te-Moak Tribe of Western Shoshone	Elko	Planning	\$ 300,000	\$ -
Nevada	ED23SEA3020024	Western Nevada Development District	Carson City	Planning	\$ 240,000	\$ 240,000
Nevada	ED23SEA3030023	Northeastern Nevada Regional Development Authority	Elko	Technical Assistance	\$ 70,000	\$ 70,000
New Hampshire	ED22PHI3020022	North Country Council	Littleton	Planning	\$ 70,000	\$ 70,000
New Hampshire	ED22PHI3020049	Rockingham Economic Development Corporation	Raymond	Planning	\$ 70,000	\$ 70,000
New Jersey	10115358	City of North Wildwood	Wildwood	Public Works	\$ 1,149,518	\$ 1,919,507
New Jersey	10115368	City of Vineland	Vineland	Public Works	\$ 3,000,000	\$ 3,000,000
New Jersey	ED21PHI3030010	Kean University	Union	Technical Assistance	\$ 137,923	\$ 140,298
New Jersey	ED22PHI3020034	South Jersey Economic Development District, Inc.	Vineland	Planning	\$ 70,000	\$ 70,000
New Jersey	ED230IEOG0038	Liberty Science Center, Inc.	Jersey City	Economic Adjustment Assistance	\$ 500,000	\$ 503,690
New Mexico	86905724	Three Sisters Kitchen	Albuquerque	Economic Adjustment Assistance	\$ 200,000	\$ 200,000
New Mexico	ED23AUSOG0071	Northwest New Mexico Council of Government	Gallup	Economic Adjustment Assistance	\$ 621,000	\$ 155,250
New Mexico	ED23AUSOG0072	Village of Milan	Milan	Economic Adjustment Assistance	\$ 2,739,000	\$ 684,750
New Mexico	ED23AUSOG0096	San Juan College	Farmington	Technical Assistance	\$ 130,000	\$ 130,000
New Mexico	ED23AUSOG0108	The Regents of New Mexico State University	Las Cruces	Technical Assistance	\$ 130,000	\$ 130,000
New Mexico	ED230IEOG0087	North American Intelligent Manufacturing Initiative	Los Alamos	Build 2 Scale	\$ 300,000	\$ 300,000
New York	10115338	Peekskill Facilities Development Corporation	Peekskill	Public Works	\$ 2,396,668	\$ 599,167
New York	10115369	Niagara University	Niagara University	Public Works	\$ 1,306,800	\$ 326,700
New York	10115376	Port of Oswego Authority	Oswego	Public Works	\$ 4,000,000	\$ 1,000,000
New York	16915352	County of Westchester	White Plains	Economic Adjustment Assistance	\$ 344,000	\$ 86,000
New York	16915378	Village of Cazenovia	Cazenovia	Economic Adjustment Assistance	\$ 166,000	\$ 84,000
New York	16915381	South Bronx Overall Economic Development Corporation	Bronx (Borough of NY)	Economic Adjustment Assistance	\$ 300,000	\$ 75,000
New York	ED21PHI3030011	Cornell University	Ithaca	Technical Assistance	\$ 137,924	\$ 137,924
New York	ED22PHI3020011	Mohawk Valley Economic Development District, Inc.	Mohawk	Planning	\$ 70,000	\$ 70,000

* All supplemental Awards are funded under the Economic Adjustment Assistance (EAA) Program

** Match includes Local(Applicant) match, State, and other federal funding, where applicable

States/Territories	Project Number	Applicant	City	EDA Program	EDA Funding	Match**
New York	ED22PHI3020016	Central New York Regional Planning and Development Board	Syracuse	Planning	\$ 70,000	\$ 70,000
New York	ED22PHI3020017	Southern Tier West Regional Planning and Development Board	Salamanca	Planning	\$ 70,000	\$ 70,000
New York	ED22PHI3020018	Southern Tier East Regional Planning Development Board	Binghamton	Planning	\$ 70,000	\$ 70,000
New York	ED22PHI3020019	Lake Champlain-Lake George Regional Planning Board	Lake George	Planning	\$ 70,000	\$ 70,000
New York	ED22PHI3020020	Genesee Finger Lakes Regional Planning Council	Rochester	Planning	\$ 70,000	\$ 70,000
New York	ED22PHI3020031	Southern Tier Central Regional Planning and Development Board	Corning	Planning	\$ 70,000	\$ 70,000
New York	ED22PHI3020067	Hudson Valley Regional Council, Inc.	Newburgh	Planning	\$ 70,000	\$ 70,000
New York	ED23HDQ3130006	The Research Foundation For The State University Of New York	Binghamton	Trade Adjustment Assistance for Firms	\$ 984,677	\$ 294,640
New York	ED230IE0G0177	Cornell University	Ithaca	Build 2 Scale	\$ 2,000,000	\$ 2,000,000
New York	ED23PHI0G0031	Capital District Regional Planning Commission	Albany	Planning	\$ 210,000	\$ 210,000
New York	ED23PHI0G0159	Hudson Valley Community College	Troy	Public Works	\$ 4,000,000	\$ 4,000,000
New York	ED23PHI3020006	Seneca Nation of Indians	Salamanca	Planning	\$ 139,560	\$ -
New York	ED23PHI3030005	Saint Regis Mohawk Tribe	Hogansburg	Planning	\$ 55,000	\$ -
North Carolina	16915363	Appalachian Voices	Boone	Economic Adjustment Assistance	\$ 317,240	\$ 100,000
North Carolina	40107832	City of Eden	Eden	Public Works	\$ 1,500,000	\$ 7,648,000
North Carolina	40107847	Guilford Technical Community College	Jamestown	Public Works	\$ 1,741,378	\$ 2,612,068
North Carolina	40107877	North Carolina Coastal Federation, Inc.	Newport	Public Works	\$ 734,000	\$ 183,500
North Carolina	40607888	Town of Hertford	Hertford	Technical Assistance	\$ 180,000	\$ 120,000
North Carolina	47907842	Men and Women United for Youth	Delco	Economic Adjustment Assistance	\$ 291,377	\$ 75,290
North Carolina	47907852	City of Lexington	Lexington	Economic Adjustment Assistance	\$ 1,345,950	\$ 1,345,950
North Carolina	47907863	Town of Spindale	Spindale	Economic Adjustment Assistance	\$ 1,555,237	\$ 388,809
North Carolina	47907892	Town of Elizabethtown	Elizabethtown	Economic Adjustment Assistance	\$ 690,604	\$ 364,896
North Carolina	47907893	Gaston College	Dallas	Economic Adjustment Assistance	\$ 1,140,000	\$ 1,140,000
North Carolina	47907905	Watauga County	Boone	Economic Adjustment Assistance	\$ 817,558	\$ 250,000
North Carolina	47907908	Trustees of Maryland Community College	Spruce Pine	Economic Adjustment Assistance	\$ 1,305,585	\$ 326,396
North Carolina	ED22ATL3030042	University of North Carolina at Chapel Hill	Chapel Hill	Technical Assistance	\$ 109,618	\$ 109,618
North Carolina	ED22ATL3030045	Fayetteville State University	Fayetteville	Technical Assistance	\$ 109,618	\$ 109,618
North Carolina	ED23ATL3020009	Southwestern North Carolina Planning and Economic Development Commission	Sylva	Planning	\$ 210,000	\$ 210,000
North Carolina	ED23ATL3020016	Albemarle Commission	Hertford	Planning	\$ 210,000	\$ 90,000
North Carolina	ED23ATL3020020	Eastern Band of Cherokee Indians	Cherokee	Planning	\$ 145,000	\$ -
North Carolina	ED23ATL3020025	Western Piedmont Council of Governments	Hickory	Planning	\$ 210,000	\$ 210,000
North Carolina	ED230IE0G0156	Guilford College	Greensboro	Build 2 Scale	\$ 218,583	\$ 218,636
North Dakota	ED23DEN0G0019	Turtle Mountain Band of Chippewa Indians of North Dakota	Belcourt	Planning	\$ 153,000	\$ -
North Dakota	ED23DEN0G0084	University of North Dakota	Grand Forks	Technical Assistance	\$ 100,000	\$ 100,000

* All supplemental Awards are funded under the Economic Adjustment Assistance (EAA) Program

** Match includes Local(Applicant) match, State, and other federal funding, where applicable

States/Territories	Project Number	Applicant	City	EDA Program	EDA Funding	Match**
North Dakota	ED23DEN3020001	Tri-County Regional Development Council	Williston	Planning	\$ 210,000	\$ 210,000
North Dakota	ED23DEN3020012	South Central Dakota Regional Council	Jamestown	Planning	\$ 210,000	\$ 210,000
North Dakota	ED23DEN3020029	Red River Regional Council	Grafton	Planning	\$ 210,000	\$ 210,000
Northern Mariana Islands	7790754201	Northern Marianas College	Saipan	Economic Adjustment Assistance	\$ 2,740,000	\$ -
Northern Mariana Islands	7790766701	Northern Marianas College	Saipan	Economic Adjustment Assistance	\$ 2,740,000	\$ -
Ohio	60106461	County of Mahoning	Youngstown	Public Works	\$ 2,427,825	\$ 2,967,342
Ohio	67906468	Valley Economic Development Partners, Inc.	Youngstown	Economic Adjustment Assistance	\$ 1,000,000	\$ 1,000,000
Ohio	67906472	Adams County Regional Water District	West Union	Economic Adjustment Assistance	\$ 2,000,000	\$ 500,000
Ohio	6790628201	Columbiana County Port Authority	Lisbon	Economic Adjustment Assistance	\$ 209,678	\$ -
Ohio	ED21CHI3030022	Cleveland State University	Cleveland	Technical Assistance	\$ 124,392	\$ 129,828
Ohio	ED21CHI3030031	Bowling Green State University	Bowling Green	Technical Assistance	\$ 176,000	\$ 176,000
Ohio	ED22PHI3020078	Region 11 Council	Steubenville	Planning	\$ 35,000	\$ 35,000
Ohio	ED23CHIOG0007	Maumee Valley Planning Organization	Defiance	Planning	\$ 70,000	\$ 70,000
Ohio	ED23CHIOG0014	City of Delta	Elyria	Economic Adjustment Assistance	\$ 499,000	\$ 499,000
Ohio	ED23CHIOG0037	Jefferson County Port Authority	Steubenville	Economic Adjustment Assistance	\$ 400,000	\$ 100,000
Ohio	ED23CHIOG0112	Team Northeast Ohio	Cleveland	Planning	\$ 50,000	\$ 50,000
Ohio	ED23CHIOG0129	Ashtabula County Port Authority	Jefferson	Planning	\$ 50,000	\$ 50,000
Ohio	ED23CHI3020010	County of Erie	Sandusky	Planning	\$ 26,000	\$ -
Ohio	ED23OIEOG0036	Bowling Green State University	Bowling Green	Economic Adjustment Assistance	\$ 332,828	\$ 332,830
Ohio	ED23OIEOG0107	Cleveland State University	Cleveland	Build 2 Scale	\$ 1,801,370	\$ 1,802,809
Ohio	ED23OIEOG0118	JumpStart Inc.	Cleveland	Build 2 Scale	\$ 1,999,168	\$ 1,999,168
Ohio	ED23OIEOG0141	Dayton/Miami Valley Entrepreneurs Center, Inc.	Dayton	Build 2 Scale	\$ 400,000	\$ 400,000
Oklahoma	80105723	Southeastern Oklahoma State University	Durant	Public Works	\$ 1,000,000	\$ 589,000
Oklahoma	87905722	Cherokee Nation	Tahlequah	Economic Adjustment Assistance	\$ 1,400,000	\$ -
Oklahoma	ED23AUSOG0056	Southeastern Oklahoma State University	Durant	Technical Assistance	\$ 130,000	\$ 175,736
Oklahoma	ED23AUSOG0123	Oklahoma State University Research Foundation	Stillwater	Technical Assistance	\$ 130,000	\$ 128,731
Oklahoma	ED23AUS3020009	Indian Nations Council of Governments (INCOG) Economic Development District	Tulsa	Planning	\$ 210,000	\$ 210,000
Oklahoma	ED23AUS3020010	Association of Central Oklahoma Governments	Oklahoma City	Planning	\$ 210,000	\$ 210,000
Oklahoma	ED23AUS3020011	Association of South Central Oklahoma Governments	Duncan	Planning	\$ 210,000	\$ 90,000
Oklahoma	ED23AUS3020012	Central Oklahoma Economic Development District	Shawnee	Planning	\$ 210,000	\$ 90,000
Oklahoma	ED23AUS3020013	Eastern Oklahoma Development District	Muskogee	Planning	\$ 210,000	\$ 90,000
Oklahoma	ED23AUS3020014	Grand Gateway Economic Development Association	Big Cabin	Planning	\$ 210,000	\$ 140,000
Oklahoma	ED23AUS3020015	Kiamichi Economic Development District of Oklahoma	Wilburton	Planning	\$ 210,000	\$ 52,500
Oklahoma	ED23AUS3020016	Northern Oklahoma Development Authority	Enid	Planning	\$ 210,000	\$ 52,500

* All supplemental Awards are funded under the Economic Adjustment Assistance (EAA) Program

** Match includes Local(Applicant) match, State, and other federal funding, where applicable

States/Territories	Project Number	Applicant	City	EDA Program	EDA Funding	Match**
Oklahoma	ED23AUS3020017	Oklahoma Economic Development Authority	Hooker	Planning	\$ 210,000	\$ 52,500
Oklahoma	ED23AUS3020018	Southern Oklahoma Development Association	Durant	Planning	\$ 210,000	\$ 90,000
Oklahoma	ED23AUS3020019	South Western Oklahoma Development Authority	Burns Flat	Planning	\$ 210,000	\$ 90,000
Oklahoma	ED230IEOG0166	The Board of Regents of the University of Oklahoma	Norman	Build 2 Scale	\$ 1,868,472	\$ 1,869,369
Oregon	77907761	City of Madras	Madras	Economic Adjustment Assistance	\$ 4,421,143	\$ 1,105,286
Oregon	77907955	Port of Hood River	Hood River	Economic Adjustment Assistance	\$ 1,981,419	\$ 1,708,127
Oregon	7010754001	Klamath Community College	Klamath Falls	Public Works	\$ 900,000	\$ 2,139,682
Oregon	7790792601	Liberty Theatre Foundation, Inc.	La Grande	Economic Adjustment Assistance	\$ 36,742	\$ -
Oregon	ED21SEA3020006	Coquille Indian Tribe	North Bend	Planning	\$ 15,000	\$ -
Oregon	ED22SEA3020018	CCD Business Development Corporation	Roseburg	Planning	\$ 18,750	\$ -
Oregon	ED22SEA3030043	University of Oregon	Eugene	Technical Assistance	\$ 190,000	\$ 190,000
Oregon	ED230IEOG0186	South Coast Development Council, Inc.	Coos Bay	Build 2 Scale	\$ 300,000	\$ 327,771
Oregon	ED23SEA0G0091	City of Hillsboro	Hillsboro	Planning	\$ 300,000	\$ 300,000
Oregon	ED23SEA3020007	Oregon Cascades West Council of Governments	Albany	Planning	\$ 225,000	\$ 225,000
Oregon	ED23SEA3020008	Greater Eastern Oregon Development Corporation	Pendleton	Planning	\$ 225,000	\$ 225,000
Oregon	ED23SEA3020009	Central Oregon Intergovernmental Council	Bend	Planning	\$ 225,000	\$ 225,000
Oregon	ED23SEA3020010	South Central Oregon Economic Development District	Klamath Falls	Planning	\$ 225,000	\$ 225,000
Oregon	ED23SEA3020022	Mid-Willamette Valley Council of Governments	Salem	Planning	\$ 225,000	\$ 225,000
Oregon	ED23SEA3030005	Confederated Tribes of Warm Springs Reservation of Oregon	Warm Springs	Technical Assistance	\$ 70,000	\$ 5,000
Pennsylvania	17915372	Pennsylvania College of Technology	Williamsport	Economic Adjustment Assistance	\$ 1,989,210	\$ 1,989,210
Pennsylvania	17915380	The Enterprise Center	Philadelphia	Economic Adjustment Assistance	\$ 960,000	\$ 240,000
Pennsylvania	1791518601	The World Trade Center of Greater Philadelphia, Inc.	Philadelphia	Economic Adjustment Assistance	\$ 180,102	\$ 180,102
Pennsylvania	ED21PHI3030016	The Pennsylvania State University	University Park	Technical Assistance	\$ 137,923	\$ 137,923
Pennsylvania	ED22PHI3020024	Economic Development Council of Northeast Pennsylvania	Pittston	Planning	\$ 70,000	\$ 70,000
Pennsylvania	ED22PHI3020025	Northern Tier Regional Planning and Development Commission	Towanda	Planning	\$ 70,000	\$ 70,000
Pennsylvania	ED22PHI3020027	SEDA - Council of Governments	Lewisburg	Planning	\$ 70,000	\$ 70,000
Pennsylvania	ED22PHI3020044	Northwest Pennsylvania Regional Planning and Development Commission	Oil City	Planning	\$ 70,000	\$ 70,000
Pennsylvania	ED22PHI3020069	North Central Pennsylvania Regional Planning and Development Commission	Ridgway	Planning	\$ 70,000	\$ 70,000
Pennsylvania	ED23HDQ3130010	Midatlantic Employers' Association	King Of Prussia	Trade Adjustment Assistance for Firms	\$ 1,098,779	\$ 381,609
Pennsylvania	ED230IEOG0122	Ben Franklin Technology Center of Central and Northern PA, Inc.	State College	Build 2 Scale	\$ 412,598	\$ 412,603
Pennsylvania	ED230IEOG0179	LifeX Holdings	Pittsburgh	Build 2 Scale	\$ 1,999,524	\$ 1,999,524
Pennsylvania	ED23PHI0G0034	Southwestern Pennsylvania Commission	Pittsburgh	Planning	\$ 210,000	\$ 210,000
Pennsylvania	ED23PHI0G0078	PA Wilds Center for Entrepreneurship	Kane	Economic Adjustment Assistance	\$ 736,000	\$ 184,000
Pennsylvania	ED23PHI0G0086	SEDA Council of Governments	Lewisburg	Planning	\$ 480,000	\$ 116,000
Puerto Rico	ED21PHI3030013	University of Puerto Rico	Mayaguez	Technical Assistance	\$ 137,923	\$ 152,895

* All supplemental Awards are funded under the Economic Adjustment Assistance (EAA) Program

** Match includes Local(Applicant) match, State, and other federal funding, where applicable

States/Territories	Project Number	Applicant	City	EDA Program	EDA Funding	Match**
Puerto Rico	ED230IEOG0181	Puerto Rico Science, Technology and Research Trust	San Juan	Build 2 Scale	\$ 648,104	\$ 648,104
Rhode Island	16915359	Town of Narragansett	Narragansett (Town of)	Economic Adjustment Assistance	\$ 339,456	\$ 84,864
Rhode Island	ED21PHI3030020	University of Rhode Island	Kingston	Technical Assistance	\$ 137,923	\$ 137,923
Rhode Island	ED23PHIOG0079	City of East Providence	East Providence	Planning	\$ 200,000	\$ 100,000
Rhode Island	ED23PHIOG0082	Rhode Island Commerce Corporation	Providence	Technical Assistance	\$ 60,000	\$ 61,047
South Carolina	40607887	Catawba Regional Council of Governments	Rock Hill	Technical Assistance	\$ 129,122	\$ 32,280
South Carolina	46907886	Grand Strand Water and Sewer Authority	Conway	Economic Adjustment Assistance	\$ 128,000	\$ 32,000
South Carolina	47907837	Georgetown County	Georgetown	Economic Adjustment Assistance	\$ 3,526,192	\$ 881,548
South Carolina	47907866	York Technical College	Rock Hill	Economic Adjustment Assistance	\$ 1,641,985	\$ 410,496
South Carolina	47907876	Horry-Georgetown Technical College	Conway	Economic Adjustment Assistance	\$ 8,000,000	\$ 4,650,000
South Carolina	4790742201	City of Walterboro	Walterboro	Economic Adjustment Assistance	\$ 9,996,446	\$ 7,082,762
South Carolina	4790745401	Town of Ridgeland	Ridgeland	Economic Adjustment Assistance	\$ 1,426,716	\$ 356,680
South Carolina	4790749401	City of Georgetown	Georgetown	Economic Adjustment Assistance	\$ 2,123,117	\$ 1,281,764
South Carolina	4790767801	Town of Estill	Estill	Economic Adjustment Assistance	\$ 2,170,000	\$ -
South Carolina	4790771401	Midlands Technical College Enterprise Campus Authority	Columbia	Economic Adjustment Assistance	\$ 198,717	\$ 49,679
South Carolina	4790774401	City of Union	Union	Economic Adjustment Assistance	\$ 428,935	\$ -
South Carolina	ED22ATL3030036	University of South Carolina	Columbia	Technical Assistance	\$ 109,618	\$ 109,618
South Carolina	ED22ATL3030040	Claflin University	Orangeburg	Technical Assistance	\$ 109,618	\$ 109,618
South Carolina	ED230IEOG0146	Rock Hill Economic Development Corporation	Rock Hill	Build 2 Scale	\$ 50,000	\$ 50,000
South Dakota	57906268	Central South Dakota Enhancement District	Pierre	Economic Adjustment Assistance	\$ 250,054	\$ 250,054
South Dakota	ED23DENOG0021	Lower Brule Sioux Tribe of the Lower Brule Reservation	Lower Brule	Planning	\$ 153,000	\$ -
South Dakota	ED23DENOG0022	Rosebud Sioux Tribe	Rosebud	Planning	\$ 153,000	\$ -
South Dakota	ED23DENOG0040	City of Madison	Madison	Public Works	\$ 3,593,520	\$ 898,380
South Dakota	ED23DENOG0041	Western Dakota Technical College	Rapid City	Economic Adjustment Assistance	\$ 401,988	\$ 100,497
South Dakota	ED23DENOG0042	City of Hartford	Hartford	Public Works	\$ 1,653,160	\$ 413,290
South Dakota	ED23DENOG0079	South Dakota State University	Brookings	Technical Assistance	\$ 145,003	\$ 144,438
South Dakota	ED230IEOG0115	The Enterprise Institute	Brookings	Build 2 Scale	\$ 364,577	\$ 364,578
South Dakota	ED230IEOG0119	Elevate Rapid City	Rapid City	Build 2 Scale	\$ 100,494	\$ 100,494
Tennessee	47907831	Northwest Tennessee Development District, Inc.	Martin	Economic Adjustment Assistance	\$ 200,000	\$ 50,000
Tennessee	47907833	First Utility District of Hawkins County	Church Hill	Economic Adjustment Assistance	\$ 1,500,000	\$ 400,000
Tennessee	47907843	Greeneville Water Commission	Greeneville	Economic Adjustment Assistance	\$ 1,500,000	\$ 1,592,900
Tennessee	47907856	City of Etowah	Etowah	Economic Adjustment Assistance	\$ 2,000,000	\$ 6,085,000
Tennessee	47907868	Greater Nashville Regional Council	Nashville	Economic Adjustment Assistance	\$ 2,147,401	\$ 536,851
Tennessee	47907871	The University of Tennessee	Knoxville	Economic Adjustment Assistance	\$ 748,849	\$ 187,212
Tennessee	4790755701	Town of Oneida	Oneida	Economic Adjustment Assistance	\$ 200,000	\$ -

* All supplemental Awards are funded under the Economic Adjustment Assistance (EAA) Program

** Match includes Local(Applicant) match, State, and other federal funding, where applicable

States/Territories	Project Number	Applicant	City	EDA Program	EDA Funding	Match**
Tennessee	4790762301	Erwin Utilities Authority	Erwin	Economic Adjustment Assistance	\$ 500,000	\$ 500,000
Tennessee	ED22ATL3030039	Tennessee Technological University	Cookeville	Technical Assistance	\$ 109,618	\$ 109,618
Tennessee	ED22ATL3030047	University of Tennessee	Nashville	Technical Assistance	\$ 109,618	\$ 109,618
Tennessee	ED23ATLOG0150	MidSouth Development District	Memphis	Technical Assistance	\$ 225,000	\$ 101,195
Texas	80105706	City of Luling	Luling	Public Works	\$ 1,000,000	\$ 666,667
Texas	80105707	Paris Economic Development Corporation	Paris	Public Works	\$ 1,300,000	\$ 552,344
Texas	80105708	City of Greenville	Greenville	Public Works	\$ 1,250,000	\$ 1,250,000
Texas	80105716	Development Corporation of Harlingen, Inc.	Harlingen	Public Works	\$ 1,647,600	\$ 411,900
Texas	80105718	City of Roma	Roma	Public Works	\$ 1,700,000	\$ 500,000
Texas	80105719	City of Hidalgo	Hidalgo	Public Works	\$ 1,600,000	\$ 400,000
Texas	87905713	Texoma Council of Governments	Sherman	Economic Adjustment Assistance	\$ 200,000	\$ 200,000
Texas	ED23AUSOG0027	The Multi-Assistance Center at Morgan's Wonderland	San Antonio	Economic Adjustment Assistance	\$ 3,459,000	\$ 864,750
Texas	ED23AUSOG0070	Tarleton State University	Stephenville	Technical Assistance	\$ 130,000	\$ 130,000
Texas	ED23AUSOG0080	The University of Texas Rio Grande Valley	Edinburg	Technical Assistance	\$ 130,000	\$ 146,494
Texas	ED23AUSOG0085	Stephen F. Austin State University	Nacogdoches	Technical Assistance	\$ 130,000	\$ 282,861
Texas	ED23AUSOG0086	The University of Texas at San Antonio	San Antonio	Technical Assistance	\$ 130,000	\$ -
Texas	ED23AUS020022	City of Plainview	Plainview	Planning	\$ 111,000	\$ 74,000
Texas	ED23HDQ3130012	The University Of Texas At San Antonio	San Antonio	Trade Adjustment Assistance for Firms	\$ 1,271,625	\$ 69,757
Texas	ED230IEOG0050	South Texas College	McAllen	Economic Adjustment Assistance	\$ 283,262	\$ 287,160
Texas	ED230IEOG0055	Austin Community College District	Austin	Economic Adjustment Assistance	\$ 364,548	\$ 378,328
Texas	ED230IEOG0165	The University of Texas Rio Grande Valley	Edinburg	Build 2 Scale	\$ 744,422	\$ 773,481
Texas	ED230IEOG0167	Urban Partnerships Community Development Corporation	Houston	Build 2 Scale	\$ 741,925	\$ 745,800
Texas	ED230IEOG0168	Brownsville Community Improvement Corporation	Brownsville	Build 2 Scale	\$ 1,213,430	\$ 1,278,972
Utah	57906270	Carbon County	Price	Economic Adjustment Assistance	\$ 1,381,500	\$ 507,500
Utah	ED23DENOG0061	Southern Utah University	Cedar City	Technical Assistance	\$ 200,000	\$ 200,000
Utah	ED23DEN3020002	Uintah Basin Economic Development District	Roosevelt	Planning	\$ 210,000	\$ 90,000
Utah	ED23DEN3020003	Southeastern Utah Economic Development District	Price	Planning	\$ 210,000	\$ 90,000
Utah	ED23DEN3020022	Wasatch Front Regional Council/ Economic Development District	Salt Lake City	Planning	\$ 210,000	\$ 210,000
Utah	ED23DEN3020025	Mountainland Economic Development District	Orem	Planning	\$ 210,000	\$ 210,000
Vermont	ED22PHI3020075	Northwest Regional Planning Commission	Saint Albans	Planning	\$ 70,000	\$ 70,000
Vermont	ED230IEOG0133	Northeastern Vermont Development Association (NVDA)	St. Johnsbury	Build 2 Scale	\$ 749,947	\$ 751,480
Vermont	ED230IEOG0182	Center on Rural Innovation	Hartland	Build 2 Scale	\$ 260,379	\$ 260,379
Vermont	ED23PHI3020008	Eastern Vermont Economic Development District, Inc.	Woodstock	Planning	\$ 210,000	\$ 210,000
Virginia	10115355	County of Henry, Virginia	Martinsville	Public Works	\$ 958,960	\$ 241,040
Virginia	10115370	New River Regional Water Authority	Austinville	Public Works	\$ 3,000,000	\$ 3,830,000

* All supplemental Awards are funded under the Economic Adjustment Assistance (EAA) Program

** Match includes Local(Applicant) match, State, and other federal funding, where applicable

States/Territories	Project Number	Applicant	City	EDA Program	EDA Funding	Match**
Virginia	10115371	SOVA Innovation Hub Corporation	South Boston	Public Works	\$ 1,255,556	\$ 492,389
Virginia	16915373	Lenowisco Planning District Commission	Duffield	Economic Adjustment Assistance	\$ 200,000	\$ 50,000
Virginia	16915374	City of Hampton Public Works Department	Hampton	Economic Adjustment Assistance	\$ 246,018	\$ 104,016
Virginia	17915356	City of Newport News - Department of Development	Newport News	Economic Adjustment Assistance	\$ 640,994	\$ 200,000
Virginia	1791513401	Economic Development Authority of Amherst County, VA	Amherst	Economic Adjustment Assistance	\$ 2,600,000	\$ 100,000
Virginia	ED21PHI3030015	Virginia Polytechnic Institute and State University	Blacksburg	Technical Assistance	\$ 137,923	\$ 239,935
Virginia	ED22PHI3020012	Accomack-Northampton Planning District Commission	Accomac	Planning	\$ 70,000	\$ 70,000
Virginia	ED22PHI3020013	Lenowisco Planning District Commission	Duffield	Planning	\$ 70,000	\$ 70,000
Virginia	ED22PHI3020014	Central Shenandoah Planning District Commission	Staunton	Planning	\$ 70,000	\$ 70,000
Virginia	ED22PHI3020015	Cumberland Plateau Planning District Commission	Lebanon	Planning	\$ 70,000	\$ 70,000
Virginia	ED22PHI3020021	Mount Rogers Planning District Commission	Marion	Planning	\$ 70,000	\$ 70,000
Virginia	ED22PHI3020050	West Piedmont Planning District Commission	Martinsville	Planning	\$ 70,000	\$ 70,000
Virginia	ED22PHI3020051	Northern Neck Planning District Commission	Warsaw	Planning	\$ 70,000	\$ 70,000
Virginia	ED22PHI3020052	New River Valley Regional Commission	Fairlawn	Planning	\$ 70,000	\$ 70,000
Virginia	ED230IE0G0176	757 Accelerate dba 757 Collab	Norfolk	Build 2 Scale	\$ 1,168,789	\$ 1,168,791
Virginia	ED23PHI0G0035	Southside Planning District Commission	South Hill	Planning	\$ 210,000	\$ 210,000
Virginia	ED23PHI3030002	Middle Peninsula Planning District Commission	Saluda	Technical Assistance	\$ 70,000	\$ 70,000
Virginia	ED23PHI3030003	Northern Shenandoah Valley Regional Commission	Front Royal	Technical Assistance	\$ 70,000	\$ 70,000
Virginia	ED23PHI3030009	Commonwealth Regional Council	Farmville	Technical Assistance	\$ 70,000	\$ 70,000
Washington	70107949	Port of Chehalis	Chehalis	Public Works	\$ 3,141,029	\$ 1,766,829
Washington	ED21SEA3020007	Spokane Tribe of the Spokane Reservation	Wellpinit	Planning	\$ 15,000	\$ -
Washington	ED21SEA3020008	Makah Indian Tribe of the Makah Indian Reservation	Neah Bay	Planning	\$ 15,000	\$ -
Washington	ED22SEA3030036	Washington State University	Pullman	Technical Assistance	\$ 125,000	\$ 125,000
Washington	ED23HDQ3130008	Trade Task Group	Seattle	Trade Adjustment Assistance for Firms	\$ 1,158,280	\$ 64,112
Washington	ED230IE0G0049	Washington State University	Pullman	Economic Adjustment Assistance	\$ 252,933	\$ 257,696
Washington	ED230IE0G0139	Washington Maritime Blue	Seattle	Build 2 Scale	\$ 840,810	\$ 906,320
Washington	ED23SEA3020001	Benton-Franklin Council of Governments	Richland	Planning	\$ 225,000	\$ 225,000
Washington	ED23SEA3020002	North Olympic Peninsula Resource Conservation and Development Council	Port Angeles	Planning	\$ 210,000	\$ 210,000
Washington	ED23SEA3020012	Central Puget Sound Economic Development District	Seattle	Planning	\$ 300,000	\$ 300,000
Washington	ED23SEA3020013	Southeast Washington Economic Development Association	Clarkston	Planning	\$ 225,000	\$ 225,000
Washington	ED23SEA3020018	Lummi Indian Business Council	Bellingham	Planning	\$ 165,000	\$ -
Washington	ED23SEA3020019	Tri-County Economic Development District	Colville	Planning	\$ 210,000	\$ 140,000
Washington	ED23SEA3020020	The Confederated Tribes of the Colville Reservation	Nespelem	Planning	\$ 150,000	\$ -
Washington	ED23SEA3030004	Nooksack Indian Tribe	Deming	Technical Assistance	\$ 92,360	\$ -
Washington	ED23SEA3030025	Lower Elwha Tribal Community Council	Port Angeles	Technical Assistance	\$ 70,770	\$ -

* All supplemental Awards are funded under the Economic Adjustment Assistance (EAA) Program

** Match includes Local(Applicant) match, State, and other federal funding, where applicable

States/Territories	Project Number	Applicant	City	EDA Program	EDA Funding	Match**
West Virginia	16915350	Marshall University Research Corporation	Huntington	Economic Adjustment Assistance	\$ 376,325	\$ 105,000
West Virginia	16915351	Region VII Planning and Development Council	Buckhannon	Economic Adjustment Assistance	\$ 125,000	\$ 100,000
West Virginia	16915353	Eastern Panhandle Regional Planning and Development Council	Martinsburg	Economic Adjustment Assistance	\$ 128,000	\$ 32,000
West Virginia	16915365	Putnam County Development Authority, Inc.	Hurricane	Economic Adjustment Assistance	\$ 75,000	\$ 25,000
West Virginia	16915366	Region 1 Planning and Development Council	Princeton	Economic Adjustment Assistance	\$ 120,000	\$ 30,000
West Virginia	17915348	BridgeValley Community and Technical College	South Charleston	Economic Adjustment Assistance	\$ 1,150,987	\$ 288,872
West Virginia	17915354	Preston County Public Service District #4	Bruceton Mills	Economic Adjustment Assistance	\$ 2,288,000	\$ 572,000
West Virginia	17915357	Southern Appalachian Labor School	Kincaid	Economic Adjustment Assistance	\$ 548,000	\$ 137,000
West Virginia	17915375	Town of Pineville	Pineville	Economic Adjustment Assistance	\$ 1,500,000	\$ 5,278,000
West Virginia	1791527601	Randolph County Development Authority	Elkins	Economic Adjustment Assistance	\$ 2,173,100	\$ 3,046,915
West Virginia	1791534701	Warm Springs Public Service District	Berkeley Springs	Economic Adjustment Assistance	\$ 100,000	\$ -
West Virginia	ED21PHI3030022	Marshall University Research Corporation	Huntington	Technical Assistance	\$ 137,923	\$ 137,923
West Virginia	ED22PHI3020028	Region IV Planning and Development Council	Summersville	Planning	\$ 70,000	\$ 70,000
West Virginia	ED22PHI3020036	Mid-Ohio Valley Regional Planning and Development Council	Parkersburg	Planning	\$ 70,000	\$ 70,000
West Virginia	ED22PHI3020039	Eastern Panhandle Regional Planning and Development Council	Martinsburg	Planning	\$ 70,000	\$ 70,000
West Virginia	ED22PHI3020040	Region 7 Planning and Development Council	Buckhannon	Planning	\$ 70,000	\$ 30,000
West Virginia	ED22PHI3020071	Region 2 Planning and Development Council	Huntington	Planning	\$ 70,000	\$ 70,000
West Virginia	ED23PHI0G0028	Regional Intergovernmental Council	South Charleston	Planning	\$ 210,000	\$ 90,000
West Virginia	ED23PHI0G0076	Doddridge County Public Service District, Inc.	West Union	Economic Adjustment Assistance	\$ 2,590,800	\$ 647,700
West Virginia	ED23PHI0G0077	Randolph County Development Authority	Elkins	Economic Adjustment Assistance	\$ 480,000	\$ 120,000
West Virginia	ED23PHI0G0111	Business Development Corporation of the Northern Panhandle	Weirton	Economic Adjustment Assistance	\$ 3,126,336	\$ 781,585
West Virginia	ED23PHI3020004	Region VI Planning and Development Council	Fairmont	Planning	\$ 210,000	\$ 210,000
West Virginia	ED23PHI3020007	Region I Planning and Development Council	Princeton	Planning	\$ 210,000	\$ 90,000
Wisconsin	60106475	Lac Du Flambeau Band	Lac du Flambeau	Public Works	\$ 2,638,075	\$ -
Wisconsin	67906462	Mid-State Technical College	Wisconsin Rapids	Economic Adjustment Assistance	\$ 2,000,000	\$ 2,000,000
Wisconsin	ED21CHI3030028	University of Wisconsin-System	Platteville	Technical Assistance	\$ 106,000	\$ 177,143
Wisconsin	ED21CHI3030029	University of Wisconsin-System	Madison	Technical Assistance	\$ 186,000	\$ 186,000
Wisconsin	ED23CHI0G0024	Northcentral Technical College	Wausau	Economic Adjustment Assistance	\$ 510,430	\$ 510,430
Wisconsin	ED23CHI3020006	Northwest Regional Planning Commission	Spooner	Planning	\$ 210,000	\$ 210,000
Wisconsin	ED23CHI3020007	West Central Wisconsin Regional Planning Commission	Eau Claire	Planning	\$ 210,000	\$ 210,000
Wisconsin	ED23CHI3020008	Great Lakes Inter-Tribal Council, Inc.	Lac Du Flambeau	Planning	\$ 153,000	\$ -
Wisconsin	ED23CHI3020009	Madison Region Economic Partnership	Madison	Planning	\$ 50,000	\$ 50,000
Wisconsin	ED23CHI3020017	Mississippi River Regional Planning Commission	La Crosse	Planning	\$ 210,000	\$ 210,000
Wisconsin	ED23CHI3020019	North Central Wisconsin Regional Planning Commission	Wausau	Planning	\$ 210,000	\$ 210,000
Wisconsin	ED230IE0G0144	University of Wisconsin – Madison	Madison	Build 2 Scale	\$ 1,220,944	\$ 1,221,000

* All supplemental Awards are funded under the Economic Adjustment Assistance (EAA) Program

** Match includes Local(Applicant) match, State, and other federal funding, where applicable

States/Territories	Project Number	Applicant	City	EDA Program	EDA Funding	Match**
Wyoming	57906266	Western Wyoming Community College District	Rock Springs	Economic Adjustment Assistance	\$ 3,000,000	\$ 5,391,075
Wyoming	57906271	Converse County, Wyoming	Douglas	Economic Adjustment Assistance	\$ 2,000,000	\$ 1,735,910
Wyoming	ED23DEN0G0063	University of Wyoming	Laramie	Technical Assistance	\$ 200,000	\$ 200,071
Wyoming	ED230IE0G0132	Jackson Hole Center for Global Affairs	Jackson	Build 2 Scale	\$ 168,500	\$ 172,500
			Grand Total	590	\$ 403,070,111	\$ 319,419,223

* All supplemental Awards are funded under the Economic Adjustment Assistance (EAA) Program

** Match includes Local(Applicant) match, State, and other federal funding, where applicable

SUMMARY OF ESTIMATED PRIVATE INVESTMENT FROM EDA'S FY 2023 PUBLIC WORKS AND ECONOMIC ADJUSTMENT ASSISTANCE (REGULAR) CONSTRUCTION AWARDS

States/Territories	Project Number	Applicant	City	EDA Program	EDA Funding	Local Match	Estimated Private Investment	Private Investment Ratio
New York	10115338	Peekskill Facilities Development Corporation	Peekskill	Public Works	\$ 2,396,668	\$ 599,167	\$ -	0.00
Virginia	10115355	County of Henry, Virginia	Martinsville	Public Works	\$ 958,960	\$ 241,040	\$ 21,000,000	21.90
New Jersey	10115358	City of North Wildwood	Wildwood	Public Works	\$ 1,149,518	\$ 1,919,507	\$ 11,750,000	10.22
New Jersey	10115368	City of Vineland	Vineland	Public Works	\$ 3,000,000	\$ 3,000,000	\$ 83,000,000	27.67
New York	10115369	Niagara University	Niagara University	Public Works	\$ 1,306,800	\$ 326,700	\$ 195,930	0.15
Virginia	10115370	New River Regional Water Authority	Austinville	Public Works	\$ 3,000,000	\$ 3,830,000	\$ 715,324,032	238.44
Virginia	10115371	SOVA Innovation Hub Corporation	South Boston	Public Works	\$ 1,255,556	\$ 492,389	\$ 1,126,775	0.90
New York	10115376	Port of Oswego Authority	Oswego	Public Works	\$ 4,000,000	\$ 1,000,000	\$ 50,000	0.01
Maine	10115377	Town of Madawaska	Madawaska	Public Works	\$ 2,012,000	\$ 503,000	\$ 14,050,000	6.98
Florida	40107824	Sebring Airport Authority	Sebring	Public Works	\$ 1,830,207	\$ 457,552	\$ 35,950,100	19.64
North Carolina	40107832	City of Eden	Eden	Public Works	\$ 1,500,000	\$ 7,648,000	\$ 270,000,000	180.00
Kentucky	40107839	City of Carrollton	Carrollton	Public Works	\$ 1,962,133	\$ 6,568,882	\$ -	0.00
Kentucky	40107840	City of Danville	Danville	Public Works	\$ 1,996,505	\$ 3,707,795	\$ 413,000,000	206.86
Alabama	40107845	Craig Field Airport and Industrial Authority	Selma	Public Works	\$ 2,437,680	\$ 609,420	\$ 7,000,000	2.87
North Carolina	40107847	Guilford Technical Community College	Jamestown	Public Works	\$ 1,741,378	\$ 2,612,068	\$ -	0.00
Mississippi	40107853	East Mississippi Community College	Scooba	Public Works	\$ 3,000,000	\$ 3,944,586	\$ 750,000	0.25
Georgia	40107858	Emanuel County Development Authority	Swainsboro	Public Works	\$ 1,150,980	\$ 767,320	\$ 12,000,000	10.43
Georgia	40107859	Brewton-Parker College	Mount Vernon	Public Works	\$ 1,515,000	\$ 1,010,000	\$ 1,400,000	0.92
Alabama	40107867	North Baldwin Utilities	Bay Minette	Public Works	\$ 2,500,000	\$ 3,910,256	\$ -	0.00
North Carolina	40107877	North Carolina Coastal Federation, Inc.	Newport	Public Works	\$ 734,000	\$ 183,500	\$ -	0.00
Georgia	47907857	Wiregrass Georgia Technical College	Fitzgerald	Economic Adjustment Assistance	\$ 742,180	\$ 318,078	\$ 40,000,000	53.90
Missouri	50106274	City of Washington	Washington	Public Works	\$ 1,301,265	\$ 1,301,265	\$ 110,000,000	84.53
Ohio	60106461	County of Mahoning	Youngstown	Public Works	\$ 2,427,825	\$ 2,967,342	\$ 5,000,000	2.06
Indiana	60106464	City of Jasper	Jasper	Public Works	\$ 1,186,000	\$ 1,186,000	\$ 34,000,000	28.67
Michigan	60106467	Charter Township of Mundy	Swartz Creek	Public Works	\$ 2,000,000	\$ 2,502,393	\$ 30,000,000	15.00
Indiana	60106470	Town of Oxford	Oxford	Public Works	\$ 1,700,425	\$ 1,700,425	\$ -	0.00
Wisconsin	60106475	Lac Du Flambeau Band	Lac du Flambeau	Public Works	\$ 2,638,075	\$ -	\$ 500,000	0.19
Arizona	70107933	Fort Mojave Aha Macav Power Service	Mohave Valley	Public Works	\$ 3,998,434	\$ -	\$ -	0.00
California	70107939	Alchemist Community Development Corporation	Sacramento	Public Works	\$ 3,879,429	\$ 969,858	\$ 295,000	0.08
Washington	70107949	Port of Chehalis	Chehalis	Public Works	\$ 3,141,029	\$ 1,766,829	\$ 3,434,711	1.09
California	70107950	Yurok Economic Development Corporation	Klamath	Public Works	\$ 6,022,800	\$ 300,000	\$ -	0.00

States/Territories	Project Number	Applicant	City	EDA Program	EDA Funding	Local Match	Estimated Private Investment	Private Investment Ratio
California	70107953	Tule River Economic Development Corporation	Porterville	Public Works	\$ 3,195,378	\$ 1,646,103	\$ 1,400,000	0.44
Oregon	77907955	Port of Hood River	Hood River	Economic Adjustment Assistance	\$ 1,981,419	\$ 1,708,127	\$ 390,000	0.20
Texas	80105706	City of Luling	Luling	Public Works	\$ 1,000,000	\$ 666,667	\$ 25,500,000	25.50
Texas	80105707	Paris Economic Development Corporation	Paris	Public Works	\$ 1,300,000	\$ 552,344	\$ 29,800,000	22.92
Texas	80105708	City of Greenville	Greenville	Public Works	\$ 1,250,000	\$ 1,250,000	\$ 40,000,000	32.00
Arkansas	80105710	Pulaski County	Little Rock	Public Works	\$ 3,000,000	\$ 952,690	\$ 396,750,000	132.25
Louisiana	80105711	Tunica-Biloxi Tribe of Louisiana	Marksville	Public Works	\$ 1,600,000	\$ 250,000	\$ 1,360,000	0.85
Arkansas	80105714	Shorter College Inc	North Little Rock	Public Works	\$ 1,275,000	\$ 600,000	\$ -	0.00
Texas	80105716	Development Corporation of Harlingen, Inc.	Harlingen	Public Works	\$ 1,647,600	\$ 411,900	\$ 4,000,000	2.43
Texas	80105718	City of Roma	Roma	Public Works	\$ 1,700,000	\$ 500,000	\$ 14,800,000	8.71
Texas	80105719	City of Hidalgo	Hidalgo	Public Works	\$ 1,600,000	\$ 400,000	\$ 34,000,000	21.25
Arkansas	80105720	Arkansas Construction Education Foundation	Little Rock	Public Works	\$ 1,158,000	\$ 1,158,000	\$ -	0.00
Arkansas	80105721	Marble Falls Sewer Improvement District	Marble Falls	Public Works	\$ 1,000,000	\$ 1,924,960	\$ 40,000,000	40.00
Oklahoma	80105723	Southeastern Oklahoma State University	Durant	Public Works	\$ 1,000,000	\$ 589,000	\$ 8,700,000	8.70
Louisiana	80205709	Lake Providence Port Commission	Lake Providence	Public Works	\$ 380,000	\$ 95,172	\$ 30,000,000	78.95
Virginia	1791513401	Economic Development Authority of Amherst County, VA	Amherst	Economic Adjustment Assistance	\$ 2,600,000	\$ 100,000	\$ -	0.00
Alabama	4010742501	City of Phenix	Phenix City	Public Works	\$ 3,758,965	\$ 3,758,967	\$ -	0.00
Michigan	6010624501	Chippewa County Economic Development Corporation	Kincheloe	Public Works	\$ 2,500,000	\$ 1,250,000	\$ -	0.00
Michigan	6010631701	City of Detroit	Detroit	Public Works	\$ 2,500,000	\$ 13,724,703	\$ -	0.00
Alaska	7010743801	Organized Village of Kake	Kake	Public Works	\$ 519,418	\$ 100,000	\$ -	0.00
Oregon	7010754001	Klamath Community College	Klamath Falls	Public Works	\$ 900,000	\$ 2,139,682	\$ -	0.00
Alaska	7010776201	Native Village of Ekwok	Ekwok	Public Works	\$ 460,477	\$ 863,926	\$ -	0.00
Idaho	7790764801	Valley County	Cascade	Economic Adjustment Assistance	\$ 850,000	\$ 250,000	\$ -	0.00
Oregon	7790792601	Liberty Theatre Foundation, Inc.	La Grande	Economic Adjustment Assistance	\$ 36,742	\$ -	\$ -	0.00
Alaska	7790792801	City and Borough of Yakutat	Yakutat	Economic Adjustment Assistance	\$ 554,040	\$ 138,510	\$ -	0.00
Alabama	ED23ATLOG0044	Utilities Board of the City of Tuskegee	Tuskegee	Public Works	\$ 2,642,744	\$ 1,132,604	\$ -	0.00
Texas	ED23AUSOG0027	The Multi-Assistance Center at Morgan's Wonderland	San Antonio	Economic Adjustment Assistance	\$ 3,459,000	\$ 864,750	\$ 47,500,000	13.73
Indiana	ED23CHIOG0081	Rose-Hulman Institute of Technology, Inc.	Terre Haute	Public Works	\$ 2,203,650	\$ 6,610,950	\$ 2,000,000	0.91
Illinois	ED23CHIOG0090	Kaskaskia Regional Port District	Red Bud	Public Works	\$ 1,688,625	\$ 1,205,925	\$ 20,000,000	11.84
Missouri	ED23DENOG0001	Ozarks Technical Community College	Springfield	Public Works	\$ 1,712,580	\$ 3,140,357	\$ -	0.00
South Dakota	ED23DENOG0040	City of Madison	Madison	Public Works	\$ 3,593,520	\$ 898,380	\$ 10,000,000	2.78
South Dakota	ED23DENOG0042	City of Hartford	Hartford	Public Works	\$ 1,653,160	\$ 413,290	\$ 1,500,000	0.91

States/Territories	Project Number	Applicant	City	EDA Program	EDA Funding	Local Match	Investment	Investment Ratio
Missouri	ED23DENOG0081	City of Moberly	Moberly	Public Works	\$ 1,500,000	\$ 1,641,120	\$ 13,000,000	8.67
Massachusetts	ED23PHIOG0029	Town of East Bridgewater	East Bridgewater	Public Works	\$ 3,000,000	\$ 6,099,000	\$ 47,875,000	15.96
New York	ED23PHIOG0159	Hudson Valley Community College	Troy	Public Works	\$ 4,000,000	\$ 4,000,000	\$ 112,000,000	28.00
California	ED23SEAOG0010	San Bernardino Community College District Economic Development and Corporate Training	San Bernardino	Public Works	\$ 3,000,000	\$ 1,066,216	\$ -	0.00
Grand Total				67	\$ 134,705,165	\$ 118,446,715	\$2,690,401,548	19.97

SUMMARY OF EDA FY 2023 FUNDING AND AWARDS BY PROGRAM CATEGORY PER STATE/TERRITORY (INCLUDING SUPPLEMENTAL* AWARDS)

States/ Territories	Build 2 Scale	Total Build 2 Scale	Economic Adjustment Assistance	Total Economic Adjustment Assistance Awards	Planning	Total Planning Awards	Public Works	Total Public Works Awards	Research and National Technical Assistance	Total Research and National Technical Assistance Awards	Technical Assistance	Total Technical Assistance Awards	Trade Adjustment Assistance for Firms	Total Trade Adjustment Assistance for Firms Awards	Total EDA Funding per State/ Territory	Total Awards per State/ Territory
Alabama	\$ 748,469	1	\$ 6,455,969	4	\$ 1,260,000	6	\$ 11,339,389	4			\$ 259,618	2			\$ 20,063,445	17
Alaska			\$ 1,704,040	3	\$ 227,500	2	\$ 979,895	2			\$ 225,000	2			\$ 3,136,435	9
Arizona	\$ 598,504	2	\$ 1,091,000	3	\$ 450,000	2	\$ 3,998,434	1			\$ 170,000	2			\$ 6,307,938	10
Arkansas	\$ 1,172,715	1	\$ 918,521	3	\$ 1,914,800	9	\$ 6,433,000	4			\$ 260,000	2			\$ 10,699,036	19
California	\$ 3,049,844	3	\$ 2,307,620	6	\$ 378,750	3	\$ 16,097,607	4			\$ 601,800	5	\$ 1,583,887	1	\$ 24,019,508	22
Colorado	\$ 2,732,577	2	\$ 433,240	1	\$ 783,000	4					\$ 279,720	3	\$ 1,402,009	1	\$ 5,630,546	11
Connecticut	\$ 1,999,415	1			\$ 340,000	3					\$ 137,923	1			\$ 2,477,338	5
Delaware	\$ 750,000	1									\$ 137,923	1			\$ 887,923	2
District of Columbia	\$ 750,000	1							\$ 599,744	2	\$ 763,159	4			\$ 2,112,903	7
Florida	\$ 396,000	1	\$ 1,421,465	7	\$ 1,470,000	7	\$ 1,830,207	1			\$ 219,236	2			\$ 5,336,908	18
Georgia	\$ 749,896	1	\$ 5,075,922	4	\$ 1,695,000	8	\$ 2,665,980	2			\$ 298,684	3	\$ 1,239,320	1	\$ 11,724,802	19
Guam			\$ 4,590,538	2											\$ 4,590,538	2
Hawaii	\$ 300,000	1	\$ 656,000	1							\$ 150,000	1			\$ 1,106,000	3
Idaho			\$ 850,000	1							\$ 125,000	1			\$ 975,000	2
Illinois	\$ 750,000	1	\$ 1,026,565	3	\$ 510,000	4	\$ 1,688,625	1	\$ 798,937	1	\$ 212,000	2	\$ 1,168,871	1	\$ 6,154,997	13
Indiana	\$ 1,447,866	2	\$ 2,251,658	2	\$ 987,500	6	\$ 5,090,075	3	\$ 525,902	1	\$ 290,708	3			\$ 10,593,709	17
Iowa			\$ 6,873,476	4	\$ 1,260,000	6					\$ 150,000	1			\$ 8,283,476	11
Kansas											\$ 299,772	2			\$ 299,772	2
Kentucky	\$ 749,795	1	\$ 9,540,498	7	\$ 1,442,700	1	\$ 3,958,638	2			\$ 359,024	4			\$ 16,050,655	15
Louisiana	\$ 4,593,604	4	\$ 1,800,000	1	\$ 250,000	1	\$ 1,980,000	2			\$ 260,000	2			\$ 8,883,604	10
Maine	\$ 669,433	1			\$ 560,000	6	\$ 2,012,000	1			\$ 137,923	1			\$ 3,379,356	9
Maryland	\$ 936,223	2			\$ 280,000	2					\$ 137,923	1			\$ 1,354,146	5
Massachusetts	\$ 3,649,943	3	\$ 1,583,390	5	\$ 760,000	7	\$ 3,000,000	1			\$ 388,384	2	\$ 1,209,066	1	\$ 10,590,783	19
Michigan	\$ 3,150,000	3	\$ 1,462,326	4	\$ 987,130	7	\$ 7,000,000	3			\$ 302,000	2	\$ 1,193,670	1	\$ 14,095,126	20
Minnesota			\$ 3,382,337	2	\$ 420,000	2					\$ 1,063,368	3			\$ 4,865,705	7
Mississippi			\$ 500,000	3	\$ 420,000	2	\$ 3,000,000	1			\$ 109,618	1			\$ 4,029,618	7
Missouri	\$ 3,070,706	3	\$ 875,910	3	\$ 1,386,000	8	\$ 4,513,845	3			\$ 396,900	3	\$ 1,189,816	1	\$ 11,433,177	21
Montana					\$ 1,509,000	8					\$ 268,800	2			\$ 1,777,800	10

States/ Territories	Build 2 Scale	Total Build 2 Scale	Economic Adjustment Assistance	Total Economic Adjustment Assistance Awards	Planning	Total Planning Awards	Public Works	Total Public Works Awards	Research and National Technical Assistance	Total Research and National Technical Assistance Awards	Technical Assistance	Total Technical Assistance Awards	Trade Adjustment Assistance for Firms	Total Trade Adjustment Assistance for Firms Awards	Total EDA Funding per State/ Territory	Total Awards per State/ Territory
Nebraska	\$ 637,710	1	\$ 769,266	1	\$ 210,000	1									\$ 1,616,976	3
Nevada	\$ 1,149,037	2	\$ 1,311,480	1	\$ 540,000	2					\$ 235,000	2			\$ 3,235,517	7
New Hampshire					\$ 140,000	2									\$ 140,000	2
New Jersey			\$ 500,000	1	\$ 70,000	1	\$ 4,149,518	2			\$ 137,923	1			\$ 4,857,441	5
New Mexico	\$ 300,000	1	\$ 3,560,000	3							\$ 260,000	2			\$ 4,120,000	6
New York	\$ 2,000,000	1	\$ 810,000	3	\$ 964,560	11	\$ 11,703,468	4			\$ 137,924	1	\$ 984,677	1	\$ 16,600,629	21
North Carolina	\$ 218,583	1	\$ 7,463,551	8	\$ 775,000	4	\$ 3,975,378	3			\$ 399,236	3			\$ 12,831,748	19
North Dakota					\$ 783,000	4					\$ 100,000	1			\$ 883,000	5
Northern Mariana Islands			\$ 5,480,000	2											\$ 5,480,000	2
Ohio	\$ 4,200,538	3	\$ 4,441,506	6	\$ 231,000	5	\$ 2,427,825	1			\$ 300,392	2			\$ 11,601,261	17
Oklahoma	\$ 1,868,472	1	\$ 1,400,000	1	\$ 2,310,000	11	\$ 1,000,000	1			\$ 260,000	2			\$ 6,838,472	16
Oregon	\$ 300,000	1	\$ 6,439,304	3	\$ 1,458,750	8	\$ 900,000	1			\$ 260,000	2			\$ 9,358,054	15
Pennsylvania	\$ 2,412,122	2	\$ 3,865,312	4	\$ 1,040,000	7					\$ 137,923	1	\$ 1,098,779	1	\$ 8,554,136	15
Puerto Rico	\$ 648,104	1									\$ 137,923	1			\$ 786,027	2
Rhode Island			\$ 339,456	1	\$ 200,000	1					\$ 197,923	2			\$ 737,379	4
South Carolina	\$ 50,000	1	\$ 29,640,108	10							\$ 348,358	3			\$ 30,038,466	14
South Dakota	\$ 465,071	2	\$ 652,042	2	\$ 306,000	2	\$ 5,246,680	2			\$ 145,003	1			\$ 6,814,796	9
Tennessee			\$ 8,796,250	8							\$ 444,236	3			\$ 9,240,486	11
Texas	\$ 2,699,777	3	\$ 4,306,810	4	\$ 111,000	1	\$ 8,497,600	6			\$ 520,000	4	\$ 1,271,625	1	\$ 17,406,812	19
Utah			\$ 1,381,500	1	\$ 840,000	4					\$ 200,000	1			\$ 2,421,500	6
Vermont	\$ 1,010,326	2			\$ 280,000	2									\$ 1,290,326	4
Virginia	\$ 1,168,789	1	\$ 3,687,012	4	\$ 770,000	9	\$ 5,214,516	3			\$ 347,923	4			\$ 11,188,240	21
Washington	\$ 840,810	1	\$ 252,933	1	\$ 1,515,000	9	\$ 3,141,029	1			\$ 288,130	3	\$ 1,158,280	1	\$ 7,196,182	16
West Virginia			\$ 14,781,548	14	\$ 980,000	8					\$ 137,923	1			\$ 15,899,471	23
Wisconsin	\$ 1,220,944	1	\$ 2,510,430	2	\$ 1,043,000	6	\$ 2,638,075	1			\$ 292,000	2			\$ 7,704,449	12
Wyoming	\$ 168,500	1	\$ 5,000,000	2							\$ 200,000	1			\$ 5,368,500	4
Grant Total	\$ 53,623,773	61	\$162,188,983	151	\$33,858,690	202	\$124,481,784	60	\$ 1,924,583	4	\$ 13,492,300	101	\$ 13,499,998	11	\$403,070,111	590

